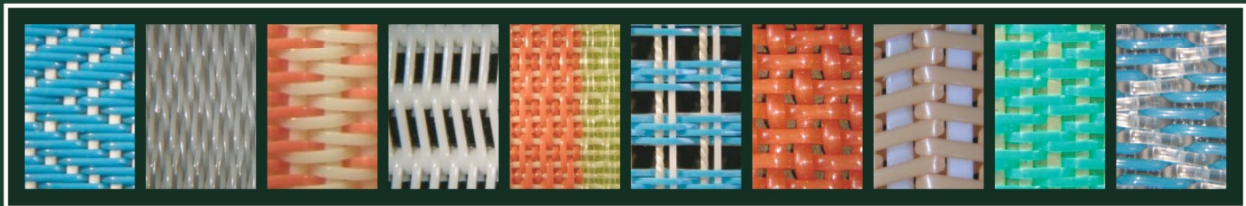
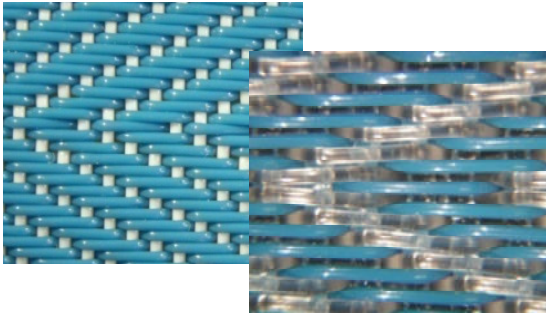


Catalogue of Products

Filtration Fabrics

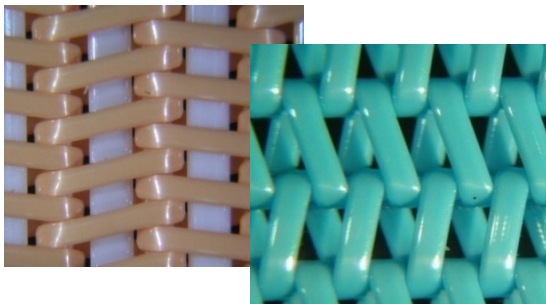


Fabrics FiltraPress



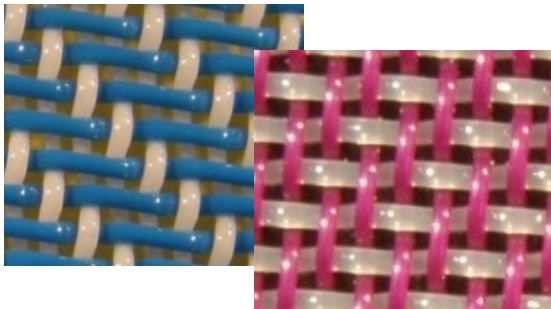
Heavy duty woven fabrics for pressing on belt filter presses (municipal and industrial sludge dewatering, mining industry, juice production etc.)

Spiral Fabrics



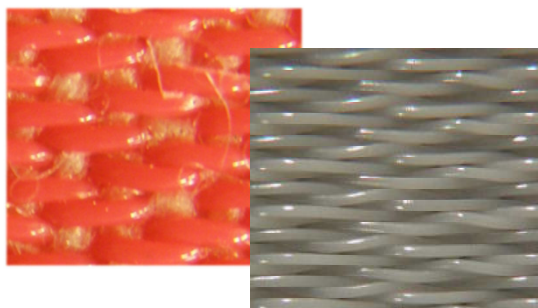
Fabrics are used for wide variety of applications – (dewatering on belt filter presses, conveyor belts, dryer belts etc.)

Fabrics FiltraDrain



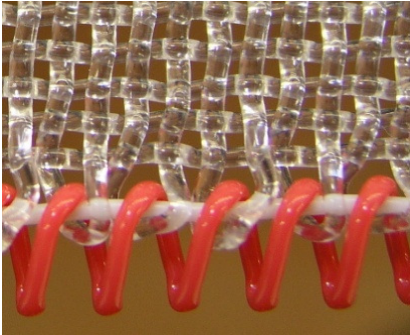
Single layer fabrics with high flow rate for thickening and filtration (gravity tables, drum filters, disk filters etc.)

Fabrics for Horizontal Vacuum Filter



Fabrics for filtration of fines on horizontal vacuum filters (mining industry, FGD – plants)

Spiral seam

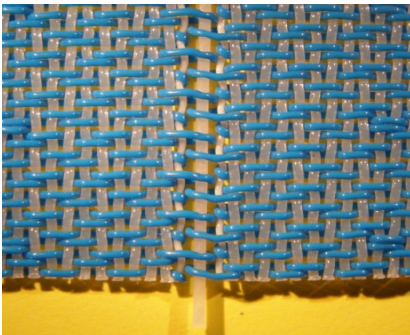


Advantages

High strength

For applications where metal seam can not be used

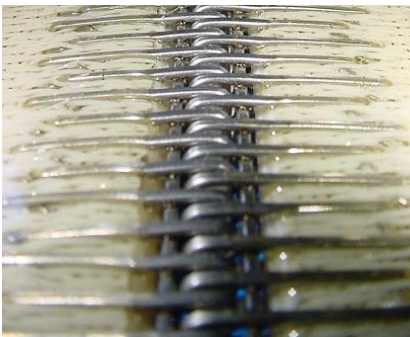
Pin seam



High strength

For applications where metal seam can not be used

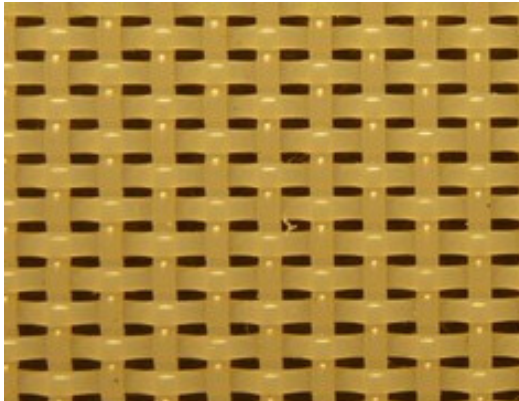
Glued stainless steel clipper seam *(for belt press)*



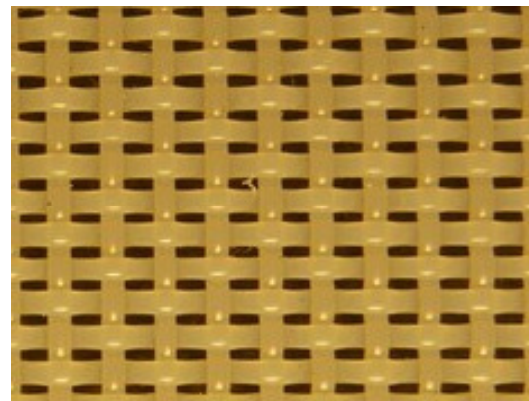
Smooth seam edges

Quick and easy seaming

FiltraDrain J36-41



Cake side



Back side

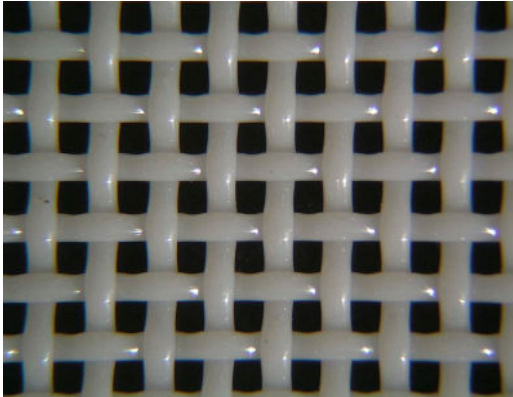
Weave		Plain Weave
Warp		0,8 mm PET
Weft		0,7 mm PET
Aperture	($\mu\text{m} \times \mu\text{m}$)	300 x 600
Air permeability	$\text{l/m}^2/\text{s}$ (200 Pa) CFM (125 Pa)	3300 410
Thickness	(mm)	1,54
Square weight	(g/m^2)	1112
Available seams		Stainless Steel Clipper Woven (endless belt)
Maximum operating temperature	($^{\circ}\text{C}$)	60 $^{\circ}$ (can be extended up to 100 $^{\circ}$)

Product description:

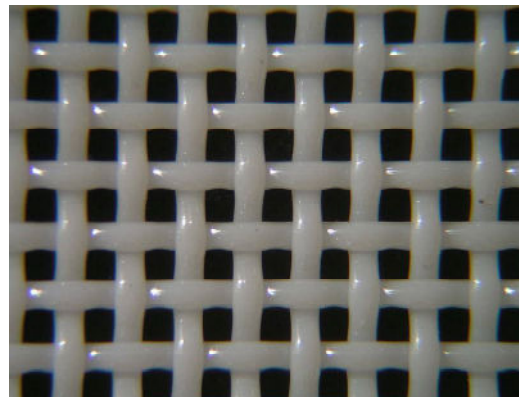
Filtration fabric with high flow rate .

Availability: on request

FiltraDrain J4-59



Cake side



Back side

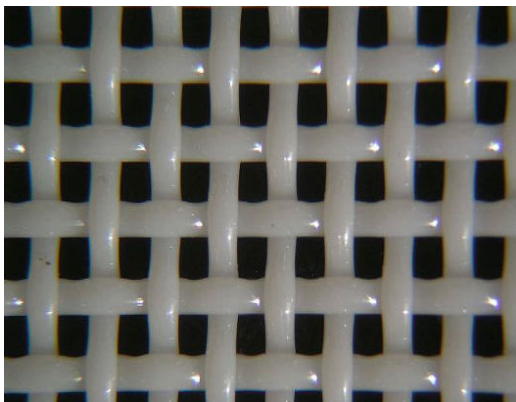
Weave		Plain Weave
Warp		0,45 mm PET
Weft		0,5 mm PET
Aperture	($\mu\text{m} \times \mu\text{m}$)	400 x 400
Air permeability	$\text{l/m}^2/\text{s}$ (200 Pa) CFM (125 Pa)	4800 590
Thickness	(mm)	0,85
Square weight	(g/m^2)	588
Available seams		Stainless Steel Clipper Pin seam Woven (endless belt)
Maximum operating temperature	($^{\circ}\text{C}$)	60 $^{\circ}$ (can be extended up to 100 $^{\circ}$)

Product description:

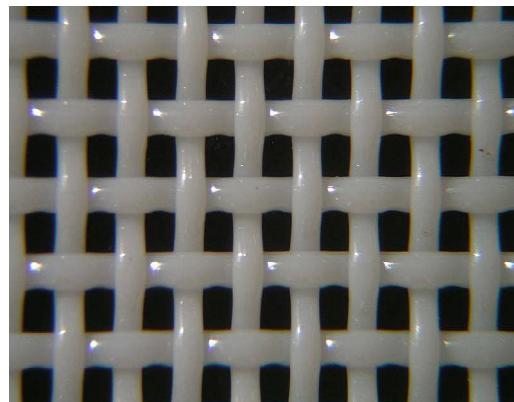
Filtration fabric with high flow rate .

Availability: on request

FiltraDrain J65-48



Cake side



Back side

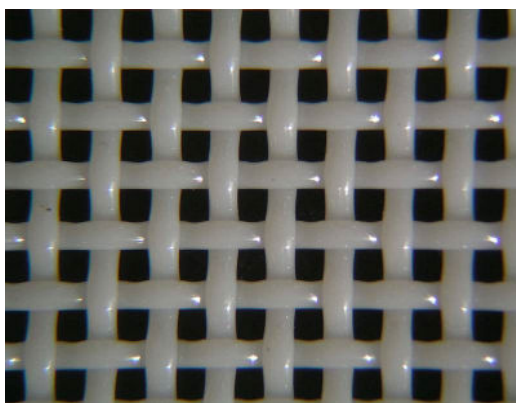
Weave	Plain Weave	
Warp	0,6 mm PET	
Weft	0,7 mm PET	
Aperture	($\mu\text{m} \times \mu\text{m}$)	600 x 500
Air permeability	$\text{l/m}^2/\text{s}$ (200 Pa) CFM (125 Pa)	3900 480
Thickness	(mm)	1,3
Square weight	(g/m^2)	997
Available seams	Stainless Steel Clipper Pin seam Woven (endless belt)	
Maximum operating temperature	($^{\circ}\text{C}$)	60 $^{\circ}$ (can be extended up to 100 $^{\circ}$)

Product description:

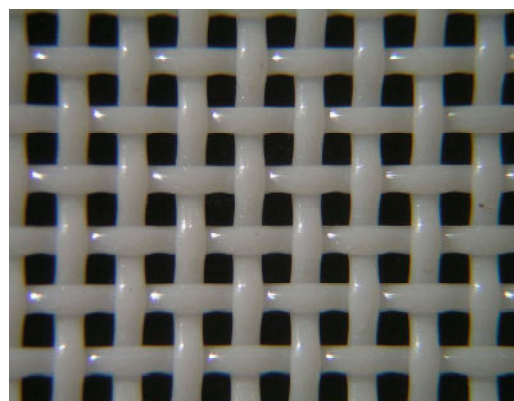
Filtration fabric with high flow rate .

Availability: on request

FiltraDrain J6-64



Cake side



Back side

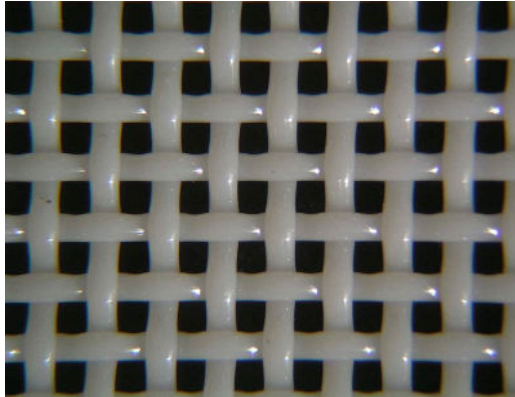
Weave	Plain Weave	
Warp	0,6 mm PET	
Weft	0,7 mm PET	
Aperture	($\mu\text{m} \times \mu\text{m}$)	600 x 600
Air permeability	$\text{l/m}^2/\text{s}$ (200 Pa) CFM (125 Pa)	5200 640
Thickness	(mm)	1,1
Square weight	(g/m^2)	806
Available seams	Stainless Steel Clipper Pin seam Woven (endless belt)	
Maximum operating temperature	($^{\circ}\text{C}$)	60 $^{\circ}$ (can be extended up to 100 $^{\circ}$)

Product description:

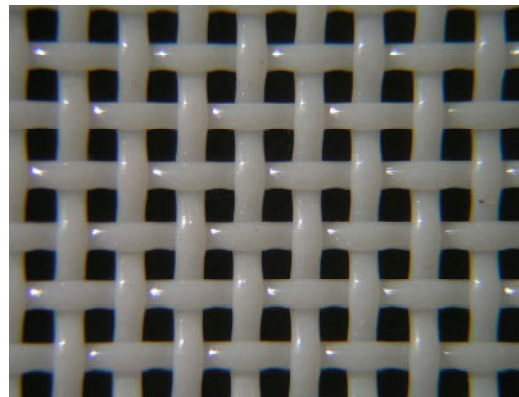
Filtration fabric with high flow rate .

Availability: on request

FiltraDrain J7-59



Cake side



Back side

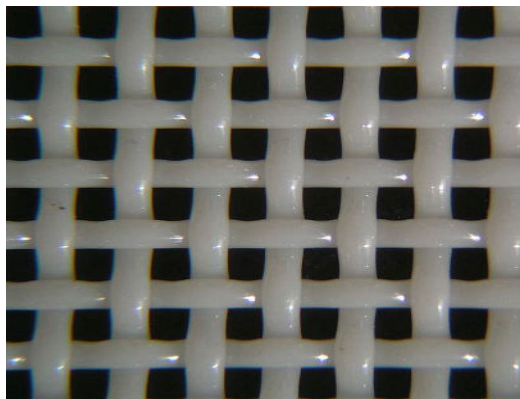
Weave		Plain Weave
Warp		0,7 mm PET
Weft		0,7 mm PET
Aperture	($\mu\text{m} \times \mu\text{m}$)	700 x 700
Air permeability	$\text{l/m}^2/\text{s}$ (200 Pa) CFM (125 Pa)	5500 680
Thickness	(mm)	1,18
Square weight	(g/m^2)	782
Available seams		Stainless Steel Clipper Pin seam Woven (endless belt)
Maximum operating temperature	($^{\circ}\text{C}$)	60 $^{\circ}$ (can be extended up to 100 $^{\circ}$)

Product description:

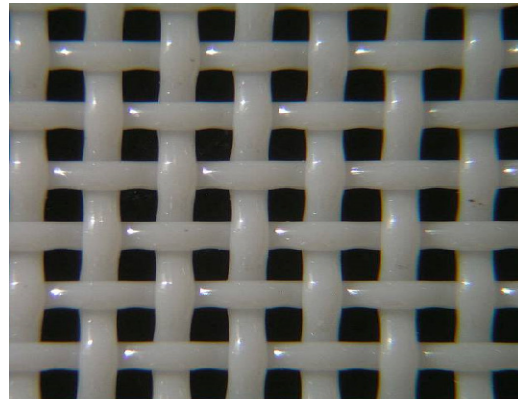
Filtration fabric with high flow rate .

Availability: on request

FiltraDrain J86-73



Cake side



Back side

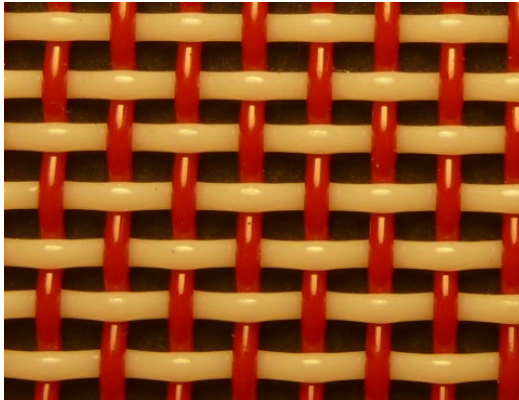
Weave		Plain Weave
Warp		0,7 mm PET
Weft		0,7 mm PET
Aperture	($\mu\text{m} \times \mu\text{m}$)	800 x 600
Air permeability	$\text{l/m}^2/\text{s}$ (200 Pa) CFM (125 Pa)	5950 730
Thickness	(mm)	1,35
Square weight	(g/m^2)	823
Available seams		Stainless Steel Clipper Pin seam Woven (endless belt)
Maximum operating temperature	($^{\circ}\text{C}$)	60 $^{\circ}$ (can be extended up to 100 $^{\circ}$)

Product description:

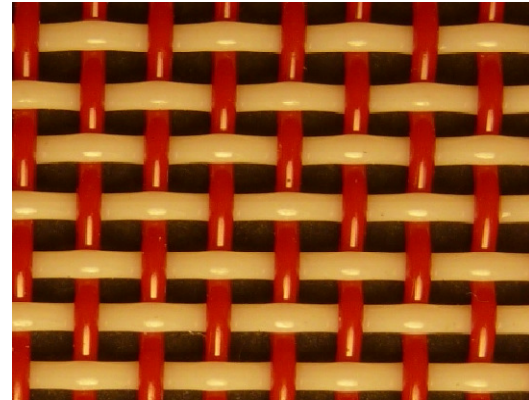
Filtration fabric with high flow rate .

Availability: on request

FiltraDrain J128-98



Cake side



Back side

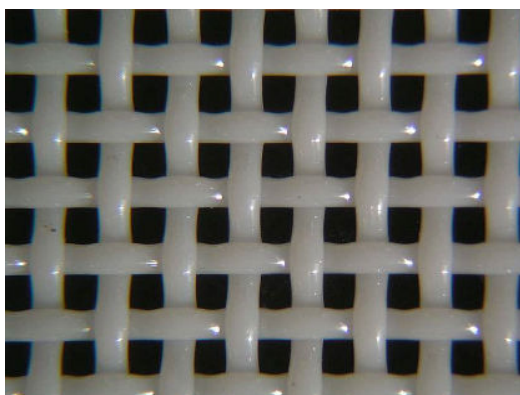
Weave	Plain Weave	
Warp	0,7 mm PET	
Weft	0,7 mm PET	
Aperture	($\mu\text{m} \times \mu\text{m}$)	1200 x 800
Air permeability	$\text{l/m}^2/\text{s}$ (200 Pa) CFM (125 Pa)	7950 980
Thickness	(mm)	1,32
Square weight	(g/m^2)	682
Available seams	Stainless Steel Clipper Pin seam Woven (endless belt)	
Maximum operating temperature	($^{\circ}\text{C}$)	60 $^{\circ}$ (can be extended up to 100 $^{\circ}$)

Product description:

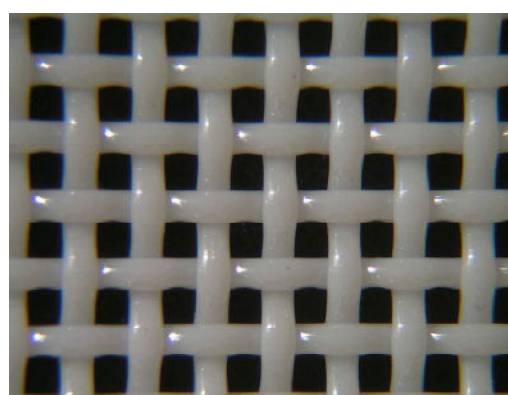
Filtration fabric with high flow rate .

Availability: on request

FiltraDrain J8-83



Cake side



Back side

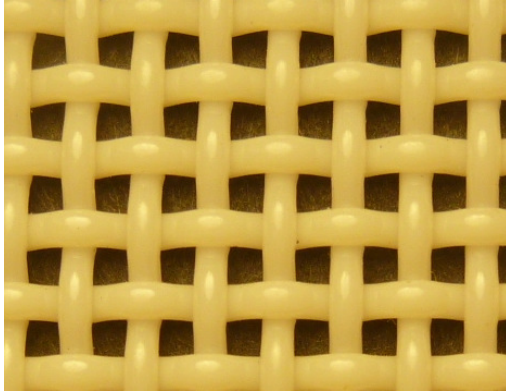
Weave	Plain Weave	
Warp	0,7 mm PET	
Weft	0,7 mm PET	
Aperture	($\mu\text{m} \times \mu\text{m}$)	800 x 800
Air permeability	$\text{l/m}^2/\text{s}$ (200 Pa) CFM (125 Pa)	6700 830
Thickness	(mm)	1,32
Square weight	(g/m^2)	774
Available seams	Stainless Steel Clipper Pin seam Woven (endless belt)	
Maximum operating temperature	($^{\circ}\text{C}$)	60 $^{\circ}$ (can be extended up to 100 $^{\circ}$)

Product description:

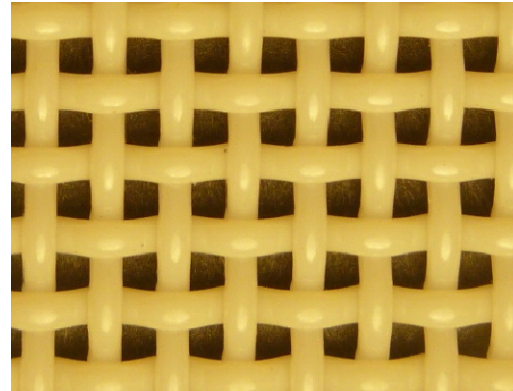
Filtration fabric with high flow rate .

Availability: on request

FiltraDrain J10-83



Cake side



Back side

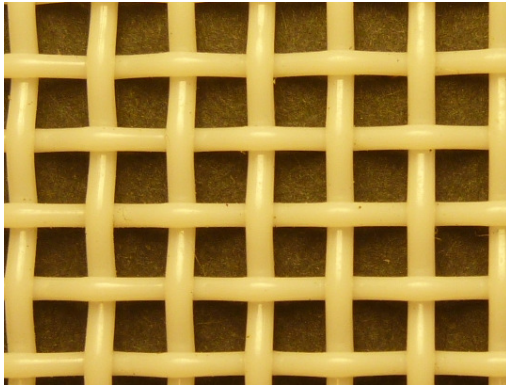
Weave		Plain Weave
Warp		0,9 mm PET
Weft		0,9 mm PET
Aperture	($\mu\text{m} \times \mu\text{m}$)	1000 x 1000
Air permeability	$\text{l/m}^2/\text{s}$ (200 Pa) CFM (125 Pa)	6700 830
Thickness	(mm)	1,60
Square weight	(g/m^2)	1021
Available seams		Stainless Steel Clipper Pin seam Woven (endless belt)
Maximum operating temperature	($^{\circ}\text{C}$)	60 $^{\circ}$ (can be extended up to 100 $^{\circ}$)

Product description:

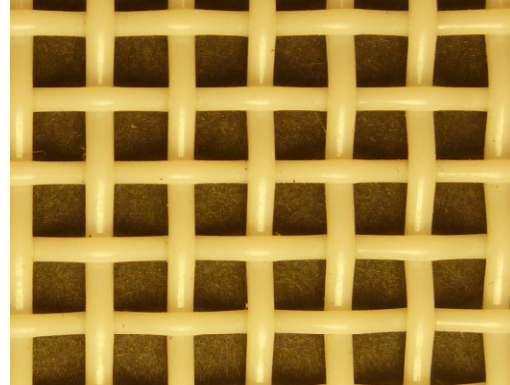
Filtration fabric with high flow rate .

Availability: on request

FiltraDrain J20-12



Cake side



Back side

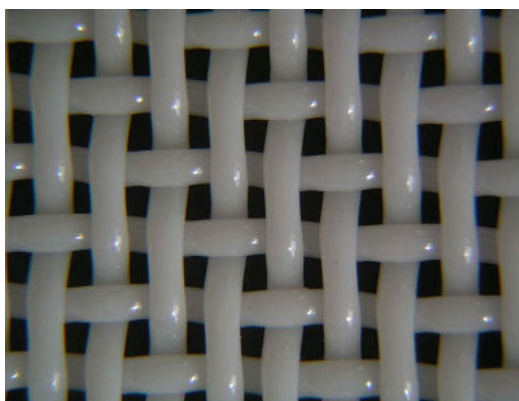
Weave		Plain Weave
Warp		0,9 mm PET
Weft		1,0 mm PET
Aperture	($\mu\text{m} \times \mu\text{m}$)	2000 x 2000
Air permeability	$\text{l/m}^2/\text{s}$ (200 Pa) CFM (125 Pa)	9900 1200
Thickness	(mm)	1,80
Square weight	(g/m^2)	720
Available seams		Stainless Steel Clipper Pin seam Woven (endless belt)
Maximum operating temperature	($^{\circ}\text{C}$)	60 $^{\circ}$ (can be extended up to 100 $^{\circ}$)

Product description:

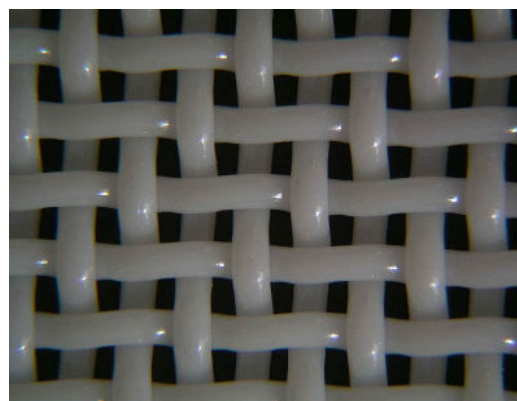
Filtration fabric with high flow rate .

Availability: on request

FiltraDrain A7-68



Cake side



Back side

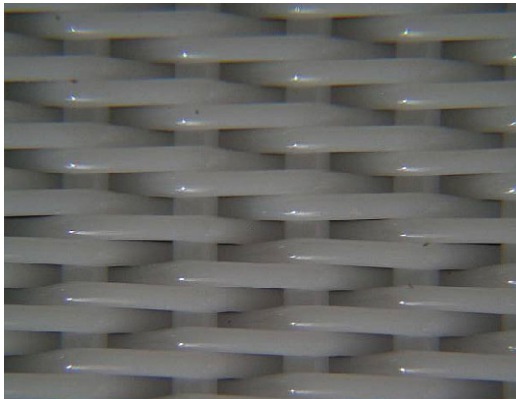
Weave		Twill 2/1
Warp		0,9 mm PET
Weft		0,9 mm PET
Number of Warps	(yarns/cm)	6,7
Number of Wefts	(yarns/cm)	5
Air permeability	l/m ² /s (at 200 Pa) CFM (at 125 Pa)	5509 680
Water permeability	mm/s (at 200 Pa)	360
Thickness	(mm)	2,01
Square weight	(g/m ²)	1133
Available seams		Stainless Steel Clipper Woven (endless belt)
Maximum operating temperature	(°C)	60° (can be extended up to 100°)

Product description:

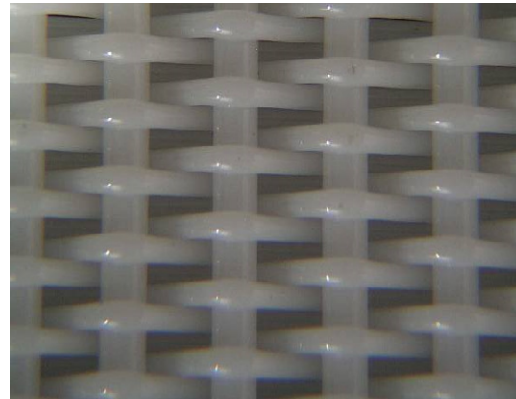
Filtration fabric with very high dewatering ability for sludge thickening.

Availability: usually in stock

FiltraPress SW22-47



Cake side



Back side

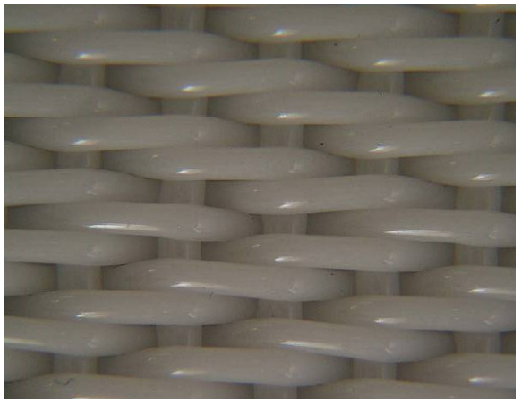
Weave		Twill 2/1
Warp		0,5 mm PET
Weft		0,9 mm PET
Number of Warps	(yarns/cm)	21,6
Number of Wefts	(yarns/cm)	5,2
Air permeability	l/m ² /s (200 Pa) CFM (125 Pa)	4800 590
Water permeability	mm/s (at 200 Pa)	318
Thickness	(mm)	1,83
Square weight	(g/m ²)	1196
Available seams		Stainless Steel Clipper Woven (endless belt)
Maximum operating temperature	(°C)	60° (can be extended up to 100°)

Product description:

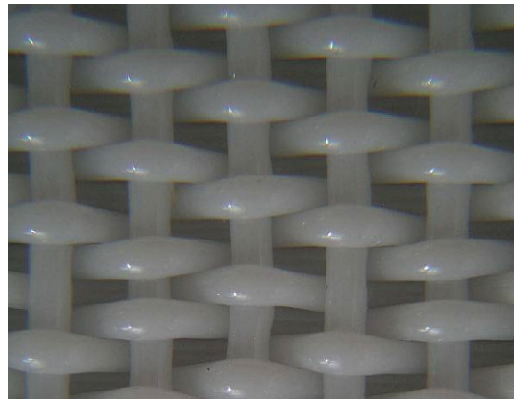
Filtration fabric with very high dewatering ability for sludge thickening.

Availability: usually in stock

FiltraPress SW17-36



Cake side



Back side

Weave		Twill 2/1
Warp		0,7 mm PET
Weft		0,9 mm PET
Number of Warps	(yarns/cm)	16,0
Number of Wefts	(yarns/cm)	5,0
Air permeability	l/m ² /s (200 Pa) CFM (125 Pa)	3200 400
Water permeability	mm/s (at 200 Pa)	179
Thickness	(mm)	2,1
Square weight	(g/m ²)	1550
Available seams		Stainless Steel Clipper Woven (endless belt)
Maximum operating temperature	(°C)	70° (can be extended up to 100°)

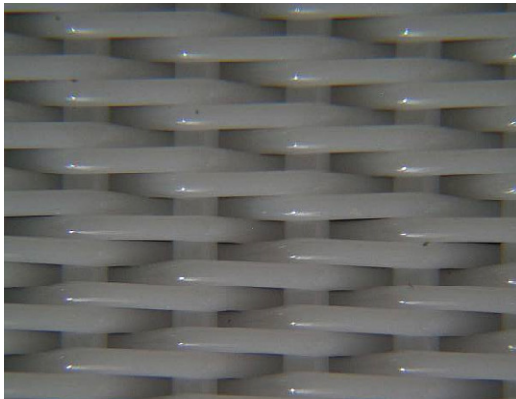
Product description

Filtration fabric for sludge dewatering on belt filter press.

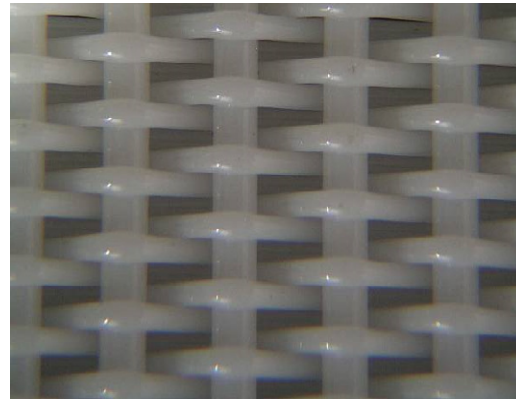
Fabric is suitable for majority of industrial applications and municipal WWTP.

Availability: usually in stock

FiltraPress SW22-40



Cake side



Back side

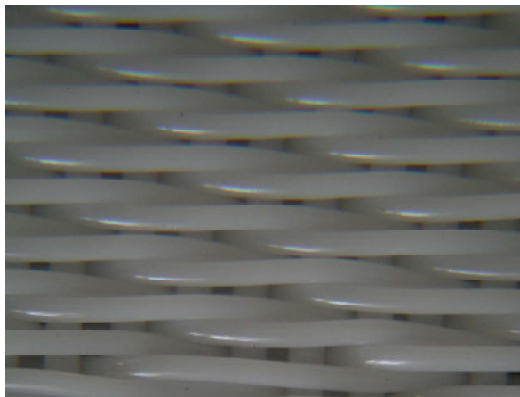
Weave		Twill 2/1
Warp		0,5 mm PET
Weft		0,7 mm PET
Number of Warps	(yarns/cm)	21,8
Number of Wefts	(yarns/cm)	6,2
Air permeability	l/m ² /s (200 Pa) CFM (125 Pa)	3800 480
Water permeability	mm/s (at 200 Pa)	261
Thickness	(mm)	1,6
Square weight	(g/m ²)	1085
Available seams		Stainless Steel Clipper Woven (endless belt)
Maximum operating temperature	(°C)	60° (can be extended up to 100°)

Product description:

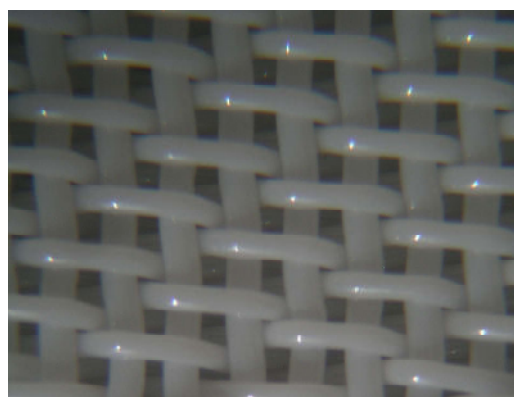
Filtration fabric for dewatering of municipal sludge of lower quality.

Availability: on request

FilteraPress E27-32



Cake side



Back side

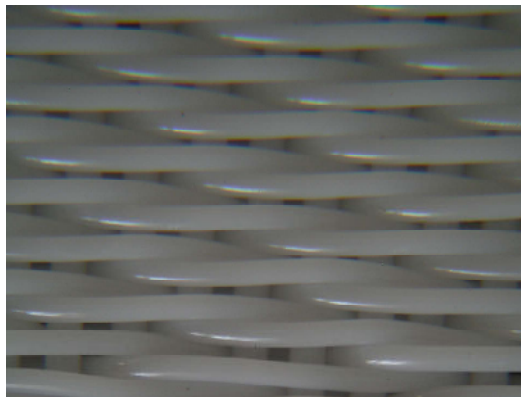
Weave		Satin 6/2
Warp		0,5 mm PET
Weft		0,8 mm PET
Number of Warps	(yarns/cm)	27
Number of Wefts	(yarns/cm)	7,1
Air permeability	l/m ² /s (200 Pa) CFM (125 Pa)	2430 - 2840 300 - 350
Water permeability	mm/s (at 200 Pa)	178
Thickness	(mm)	2,26
Square weight	(g/m ²)	1553
Available seams		Stainless Steel clipper Woven (endless belt)
Maximum operating temperature	(°C)	60° (can be extended up to 100°)

Product description:

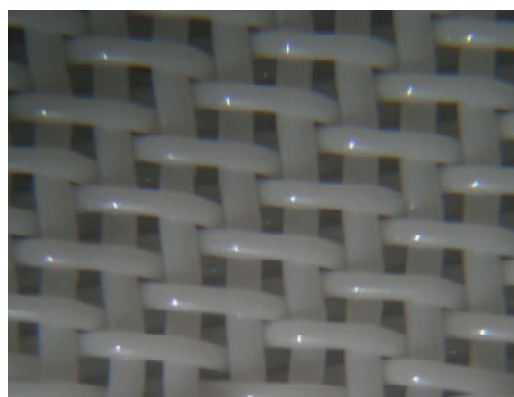
Filtration fabric for belt filter press with smooth surface and excellent cake release.

Availability: usually in stock

FilteraPress E27-50



Cake side



Back side

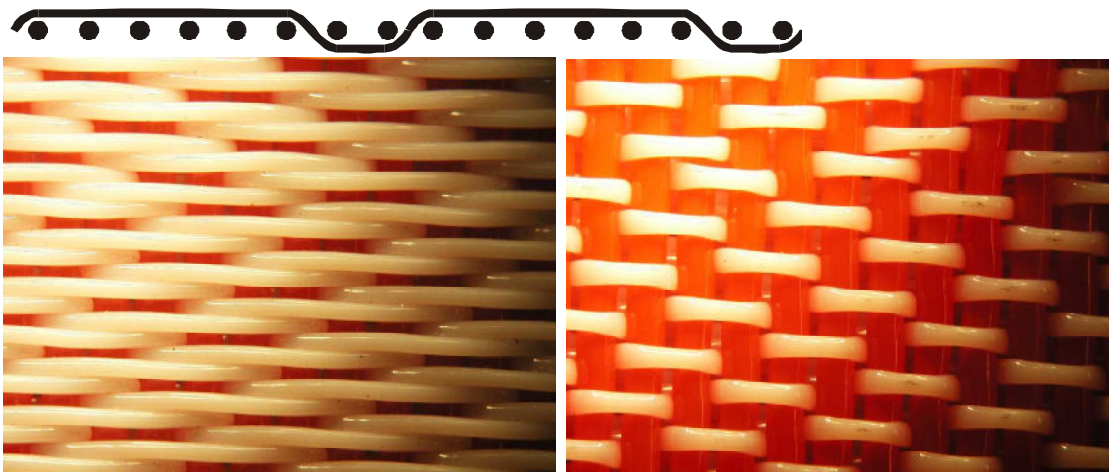
Weave		Satin 6/2
Warp		0,5 mm PET
Weft		0,9 mm PET
Number of Warps	(yarns/cm)	27
Number of Wefts	(yarns/cm)	6,7
Air permeability	l/m ² /s (200 Pa) CFM (125 Pa)	4050 500
Water permeability	mm/s (at 200 Pa)	244
Thickness	(mm)	2,26
Square weight	(g/m ²)	1525
Available seams		Stainless Steel clipper Woven (endless belt)
Maximum operating temperature	(°C)	60° (can be extended up to 100°)

Product description:

Filtration fabric for belt filter press with smooth surface and excellent cake release.

Availability: on request

FilterPress E27-32red



Cake side

Back side

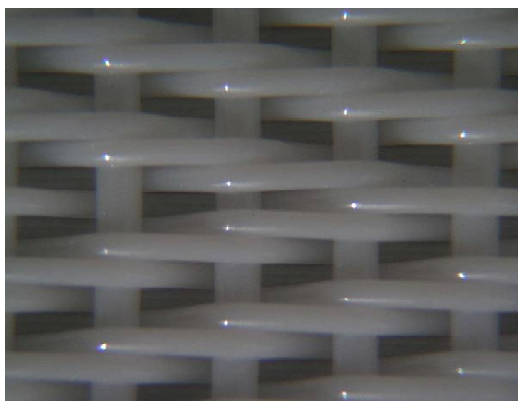
Weave	Satin 6/2	
Warp	0,5 mm PET	
Weft	1,0 mm PET	
Number of Warps	(yarns/cm)	24
Number of Wefts	(yarns/cm)	7
Air permeability	l/m ² /s (200 Pa)	3200
	CFM (125 Pa)	400
Thickness	(mm)	2,26
Square weight	(g/m ²)	1535
Available seams	Stainless Steel clipper	

Product description:

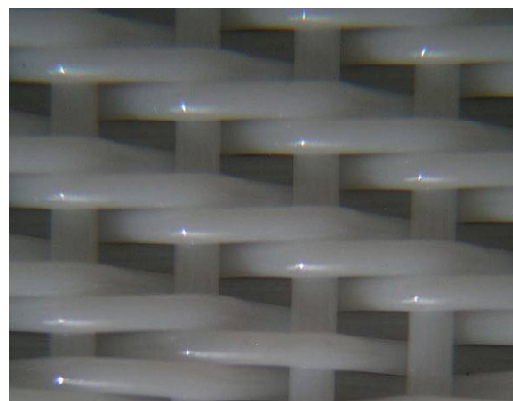
Filtration fabric for belt filter press with smooth surface and excellent cake release.

Availability: usually in stock – only standard widths

FilteraPress C17-59



Cake side



Back side

Weave		Twill 2/2
Warp		0,7 mm PET
Weft		0,9 mm PET
Number of Warps	(yarns/cm)	16,4
Number of Wefts	(yarns/cm)	4,1
Air permeability	l/m ² /s (200 Pa) CFM (125 Pa)	5300 660
Thickness	(mm)	2,36
Square weight	(g/m ²)	1394
Available seams		Stainless Steel Clipper Woven (endless belt)
Maximum operating temperature	(°C)	60° (can be extended up to 100°)

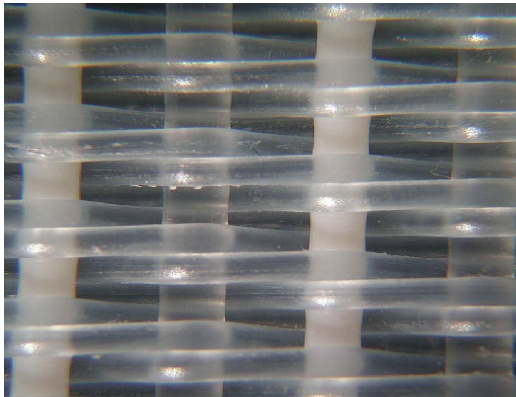
Product description

Filtration fabric for belt thickener and belt filter press.

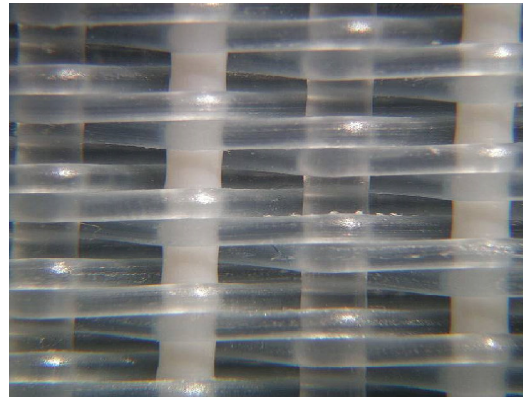
Fabric is especially suitable for abrasive sludge in mining industry.

Availability: on request

FiltraPress C13P-48



Cake side



Back side

Weave		Twill 2/2
Warp		0,9 mm PA6
Weft		1,05 mm PET + 1,2 mm PA6
Number of Warps	(yarns/cm)	12,5
Number of Wefts	(yarns/cm)	3,4
Air permeability	l/m ² /s (200 Pa) CFM (125 Pa)	4500 550
Thickness (mm)		2,88
Square weight (g/m ²)		1539
Available seams		Stainless Steel Clipper Woven (endless belt)
Maximum operating temperature	(°C)	60° (can be extended up to 100°)

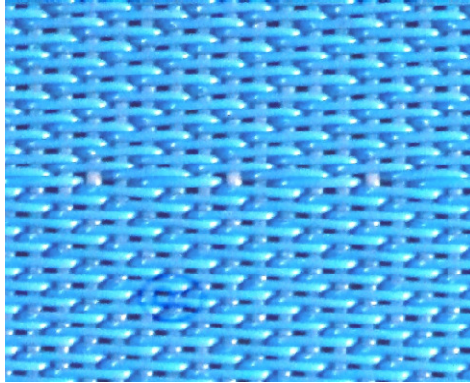
Product description

Heavy duty filtration fabric for belt filter press.

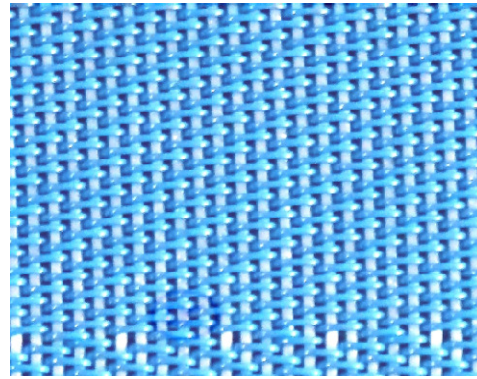
Fabric is particularly suitable for very abrasive sludge.

Availability: on request

FilteraPress HD23-55



Cake side



Back side

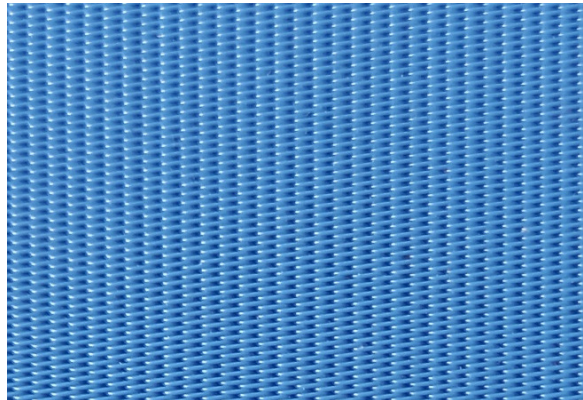
Weave		Twill 3/2
Warp		0,5 mm PET
Weft		0,8 mm PET
Number of Warps	(yarns/cm)	23
Number of Wefts	(yarns/cm)	6,7
Air permeability	l/m ² /s (200 Pa) CFM (125 Pa)	4500 550
Thickness	(mm)	1,95
Square weight	(g/m ²)	1310
Available seams		Stainless Steel Clipper Woven (endless belt)

Product description:

Filtration fabric for belt press and gravity thickeners

Availability: usually in stock

FGDTex-1130



Design	Single layer monofilament fabric	
Warp	0,2 x 0,28 mm PET monofilament	
Weft	0,6mm + 0,2mm x 4 PET monofilament	
Air permeability	l/m ² /s (200 Pa)	240
	CFM (125 Pa)	40
Fabric thickness	(mm)	1,17
Weight	(g/m ²)	1029
Particle permeability	(µm)	30
Available seams	Stainless steel clipper	

Product description:

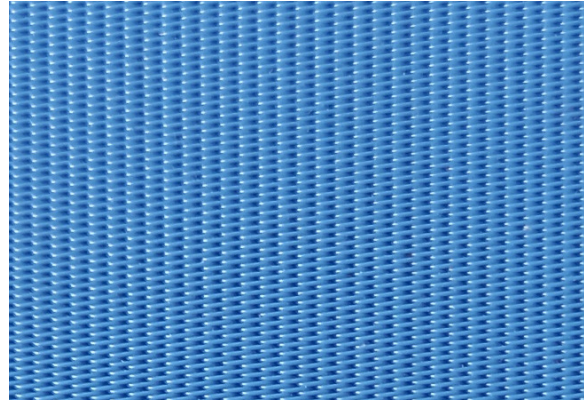
New generation of filtration fabric for gypsum dewatering in FGD.

Main advantages:

- Very good filtration properties
- Excellent fabric stiffness in cross machine direction
- High weave stability
- Maintain high air permeability throughout the fabric lifetime

Availability: on request

OreTex 1127



Design	Single layer monofilament fabric
Warp	0,3mm PET monofilament
Weft	0,5mm PET monofilament
Air permeability CFM (125 Pa)	200
Fabric thickness (mm)	1,3
Weight (g/m ²)	980
Particle permeability (µm)	90
Available seams	Stainless steel clipper Stainless steel clipper with textile flap
Temperature resistance (°C)	140

Product description:

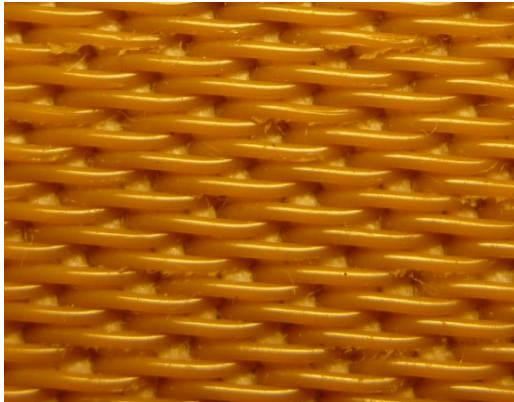
Filter fabric for vacuum belt filter

Main advantages:

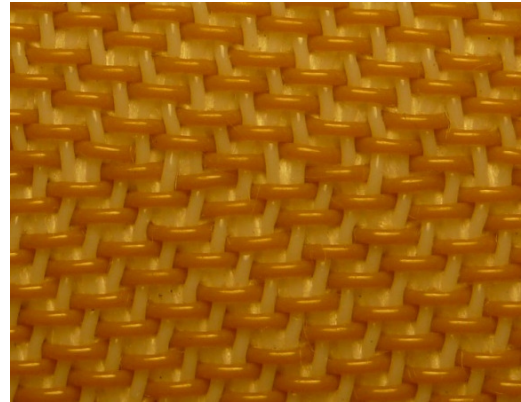
- Very good filtration properties
- Good fabric stiffness in cross machine direction
- High weave stability
- Maintain high air permeability throughout the fabric lifetime

Availability: on request

FGD-Tex 30HD



Cake side



Back side

Weave	Double layer	
Warp	0,5 mm PET	
Weft	0,5 mm PET + multifilament	
Air permeability	l/m ² /s (200 Pa) CFM (125 Pa)	220 30
Thickness	(mm)	2,03
Weight	(g/m ²)	1630
Particle permeability	(μm)	30
Available seams	Stainless steel clipper Clipper with flap	

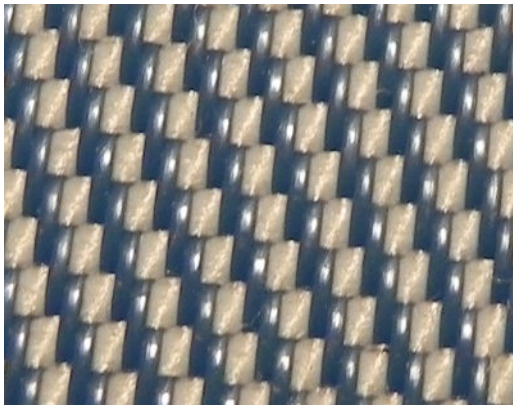
Product description:

Filtration fabric for horizontal vacuum filters.

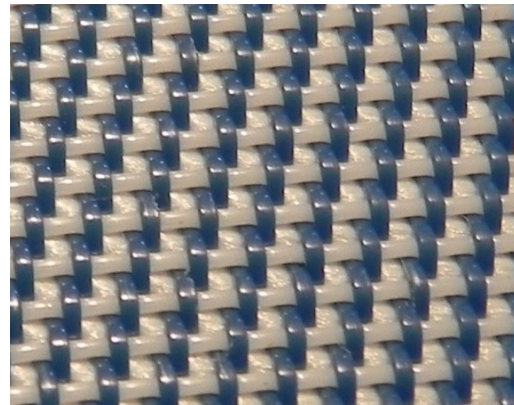
Used for gypsum filtration in flue gas desulphurization plants.

Availability: on request

FGD-Tex 30



Cake side



Back side

Weave		Double layer
Warp		0,27 x 0,5 mm PET (flat)
Weft		0,5 mm PET + multifilament
Air permeability	l/m ² /s (200 Pa) CFM (125 Pa)	250 30
Thickness	(mm)	1,3
Weight	(g/m ²)	990
Operating temperature max.	(°C)	130
Particle permeability	(µm)	15 - 20
Available seams		Stainless steel clipper Clipper with flap
Maximum operating temperature	(°C)	60° (can be extended up to 100°)

Product description:

Filtration fabric for horizontal vacuum filters.

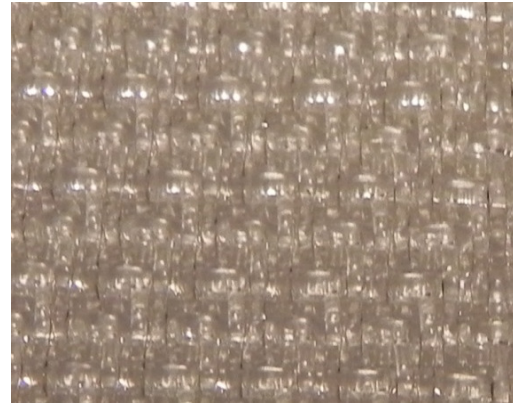
Used for gypsum filtration in flue gas desulphurization plants.

Availability: on request

VacTex 8P



Cake side



Back side

Weave	Double layer, twill	
Warp	PP monofilament	
Weft	PP mono/multi	
Air permeability	l/m ² /s (200 Pa) CFM (125 Pa)	30-50 4-6
Thickness	(mm)	1,04
Weight	(g/m ²)	710
Operating temperature max.	(°C)	90
Particle permeability	(µm)	4 - 7
Available Seams	Stainless steel clipper Clipper with flap	

Product description:

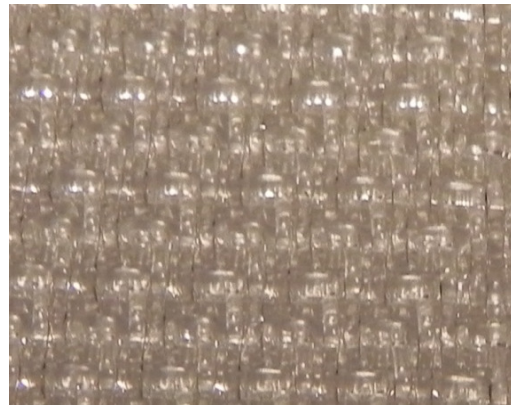
Filtration fabric for horizontal vacuum filters.

Availability: on request

VacTex 10P



Cake side



Back side

Weave		Double layer, twill
Warp		PP monofilament
Weft		PP mono/multi
Air permeability	l/m ² /s (200 Pa) CFM (125 Pa)	75 - 85 10 - 12
Thickness	(mm)	1,08
Weight	(g/m ²)	660
Operating temperature max.	(°C)	90
Particle permeability	(µm)	5 - 10
Available Seams		Stainless steel clipper Clipper with flap
Maximum operating temperature	(°C)	60° (can be extended up to 90°)

Product description:

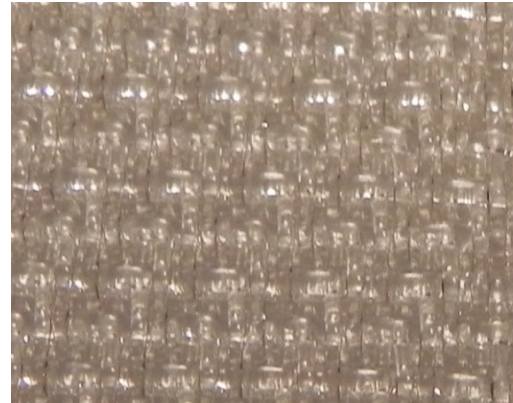
Filtration fabric for horizontal vacuum filters.

Availability: on request

VacTex 30P



Cake side



Back side

Weave		Double layer, twill
Warp		PP monofilament
Weft		PP monofilament
Air permeability	l/m ² /s (200 Pa) CFM (125 Pa)	240 30
Thickness	(mm)	1,04
Weight	(g/m ²)	590
Operating temperature max.	(°C)	90
Particle permeability	(µm)	25-35
Available Seams		Stainless steel clipper Clipper with flap
Maximum operating temperature	(°C)	60° (can be extended up to 90°)

Product description:

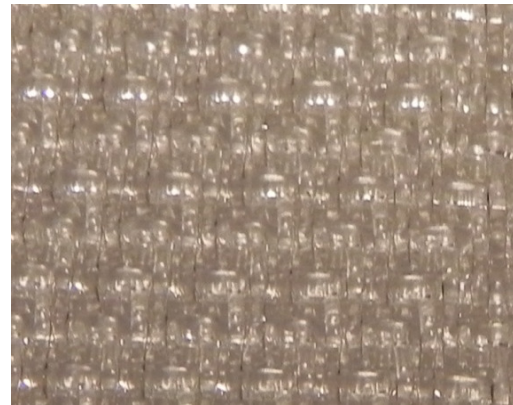
Filtration fabric for horizontal vacuum filters.

Availability: on request

VacTex 50P



Cake side



Back side

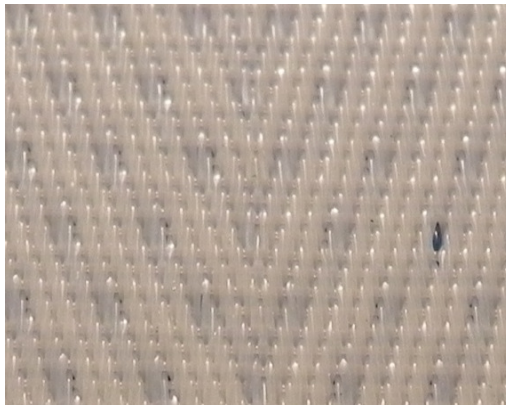
Weave		Double layer, twill
Warp		PP monofilament
Weft		PP monofilament
Air permeability	l/m ² /s (200 Pa) CFM (125 Pa)	440 60
Thickness	(mm)	1,07
Weight	(g/m ²)	601
Operating temperature max.	(°C)	90
Particle permeability	(µm)	55 - 60
Available seams		Stainless steel clipper Clipper with flap
Maximum operating temperature	(°C)	60° (can be extended up to 90°)

Product description:

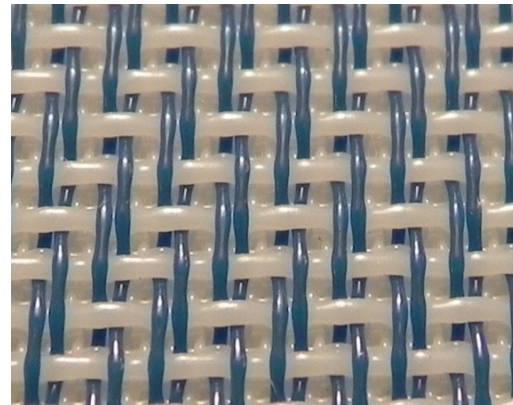
Filtration fabric for horizontal vacuum filters.

Availability: on request

VacTex 30T



Cake side



Back side

Weave		Double layer, twill
Warp		PET monofilament
Weft		PET monofilament
Air permeability	l/m ² /s (200 Pa) CFM (125 Pa)	240 30
Thickness	(mm)	1,02
Weight	(g/m ²)	760
Particle permeability	(µm)	25 - 35
Available seams		Stainless steel clipper Clipper with flap
Maximum operating temperature	(°C)	60° (can be extended up to 100°)

Product description:

Filtration fabric for horizontal vacuum filters.

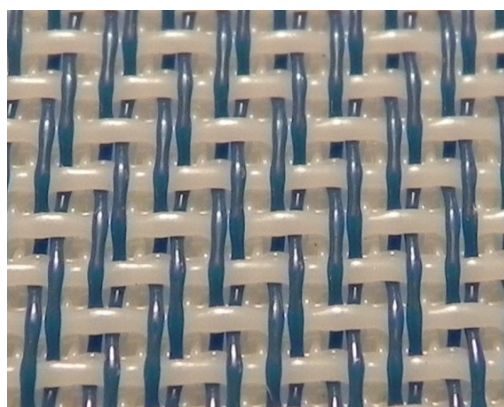
Used for gypsum filtration in flue gas desulphurization plants.

Availability: on request

VacTex 50T



Cake side



Back side

Weave	Double layer, twill	
Warp	PET monofilament	
Weft	PET monofilament	
Air permeability	l/m ² /s (200 Pa) CFM (125 Pa)	440 60
Thickness	(mm)	1,07
Weight	(g/m ²)	750
Particle permeability	(µm)	50
Available Seams	Stainless steel clipper Clipper with flap	
Maximum operating temperature	(°C)	60° (can be extended up to 100°)

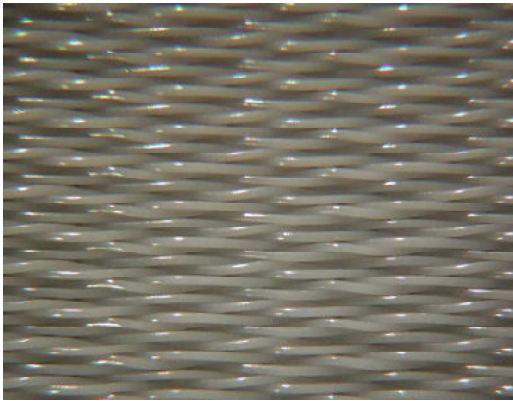
Product description:

Filtration fabric for horizontal vacuum filters.

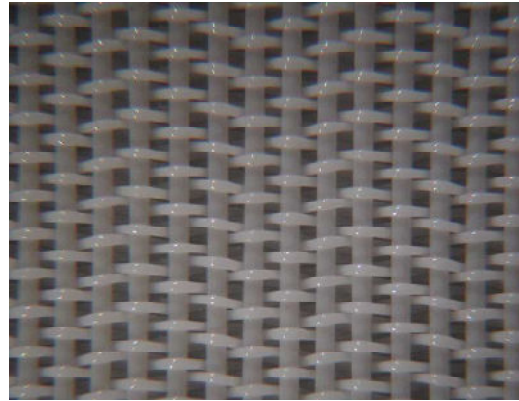
Used for gypsum filtration in flue gas desulphurization plants.

Availability: on request

OreTex H39-15



Cake side



Back side

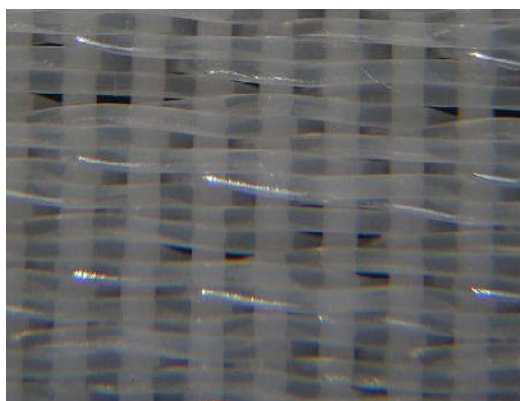
Weave		Satin 5/1
Warp		0,35 mm PET
Weft		0,5 mm PET
Number of Warps	(yarns/cm)	39,6
Number of Wefts	(yarns/cm)	10,2
Air permeability	l/m ² /s (200 Pa) CFM (125 Pa)	900 - 1200 130 - 160
Thickness	(mm)	1,3
Square weight	(g/m ²)	920
Particle permeability	(µm)	80 - 90
Available seams		Stainless Steel Clipper
Maximum operating temperature	(°C)	60° (can be extended up to 100°)

Product description:

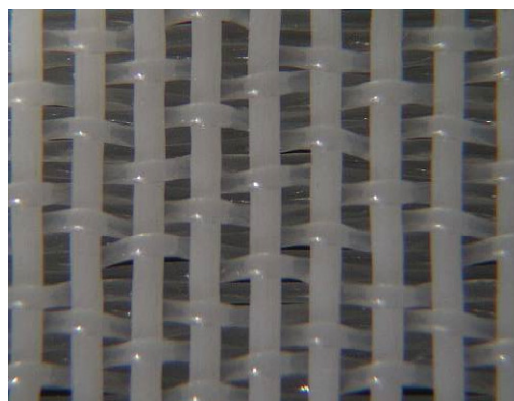
Filtration fabric for horizontal vacuum filters. Used especially in mining industry.

Availability: on request

OreTex H38-25



Cake side



Back side

Weave		Satin 5/1
Warp		0,35 mm PET
Weft		0,5 mm PET
Number of Warps	(yarns/cm)	38,2
Number of Wefts	(yarns/cm)	9,4
Air permeability	l/m ² /s (200 Pa) CFM (125 Pa)	2250 - 2600 280 - 320
Thickness	(mm)	1,3
Square weight	(g/m ²)	911
Particle permeability	(µm)	100 - 120
Available seams		Stainless Steel Clipper Clipper with flap
Maximum operating temperature	(°C)	60° (can be extended up to 100°)

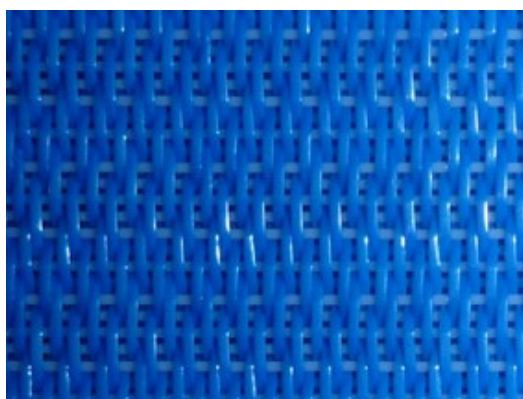
Product description:

Filtration fabric for horizontal vacuum filters.

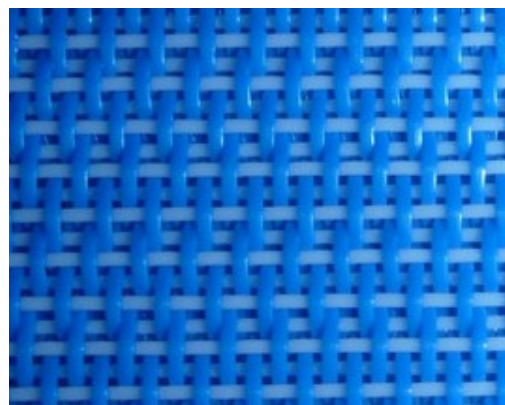
Used especially in mining industry.

Availability: on request

FoodPro F20-43



Cake side



Back side

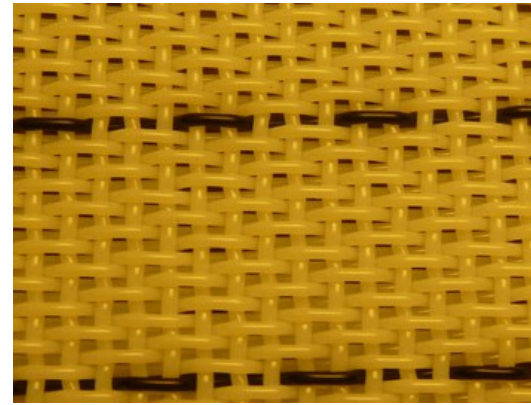
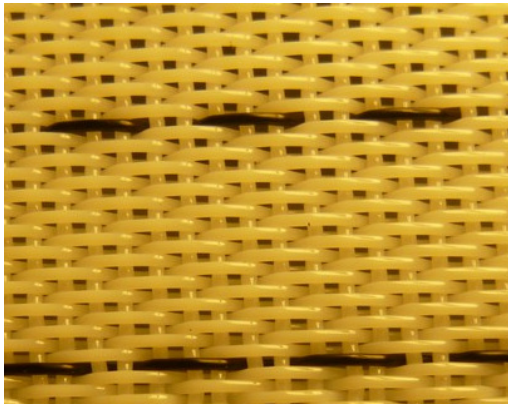
Weave		5/3
Warp		0,32 x 0,6 mm PET (flat)
Weft		0,5 mm PET
Number of Warps	(yarns/cm)	20,0
Number of Wefts	(yarns/cm)	11,1
Air permeability	l/m ² /s (at 200 Pa) CFM (at 125 Pa)	3200 - 4450 400 - 430
Thickness	(mm)	1,45
Square weight	(g/m ²)	925
Available seams		Stainless Steel Clipper
Maximum operating temperature	(°C)	60° (can be extended up to 100°)

Product description:

Drying fabric for food industry.

Availability: on request

AntiStatic K20-55



Product side

Back side

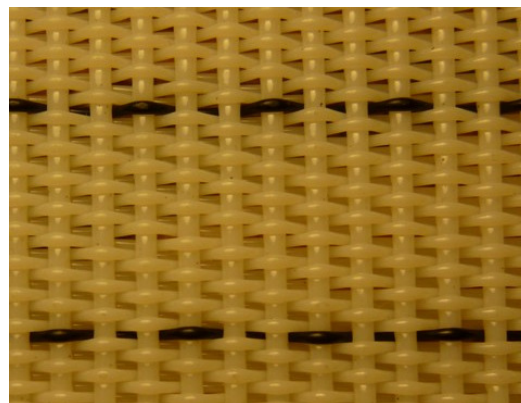
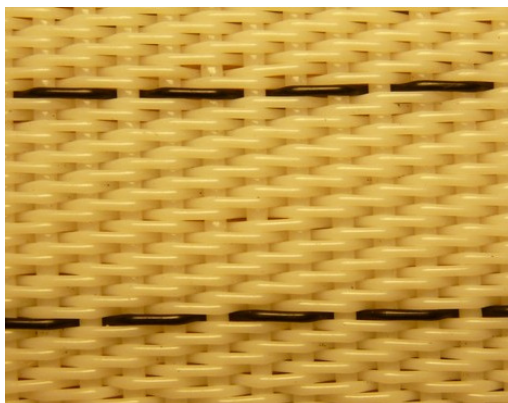
Weave		Twill 3/2
Warp		0,5mm PET + 0,5mm conductive yarn
Weft		0,6 mm PET
Number of Warps	(yarns/cm)	20
Number of Wefts	(yarns/cm)	7,5
Distance of carbon yarns	(cm)	1,0
Air permeability	l/m ² /s (at 200 Pa) CFM (at 125 Pa)	4400 - 4800 550 – 600
Thickness	(mm)	1,55
Square weight	(g/m ²)	975
Electrical resistance	(Ω/cm)	10 ⁶
Available seams		Stainless Steel Clipper
Maximum operating temperature	(°C)	60° (can be extended up to 100°)

Product description:

Antistatic woven fabric with carbon yarns.

Availability: on request

AntiStatic A20-55



Product side

Back side

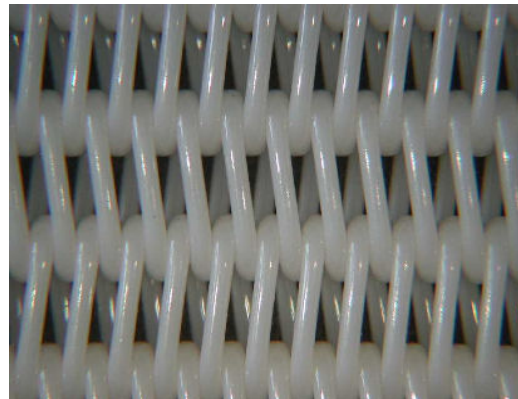
Weave		Twill 2/1
Warp		0,5mm PET + 0,5mm conductive yarn
Weft		0,9 mm PET
Number of Warps	(yarns/cm)	20
Number of Wefts	(yarns/cm)	5
Distance of carbon yarns	(cm)	1,0
Air permeability	l/m ² /s (at 200 Pa) CFM (at 125 Pa)	5030 620
Thickness	(mm)	1,65
Square weight	(g/m ²)	1180
Electrical resistance	(Ω/cm)	10 ⁶
Available seams		Stainless Steel Clipper
Maximum operating temperature	(°C)	60° (can be extended up to 100°)

Product description:

Antistatic woven fabric with black PET copolymer conductive yarns

Availability: on request

MicroSpiral F90



Product photo

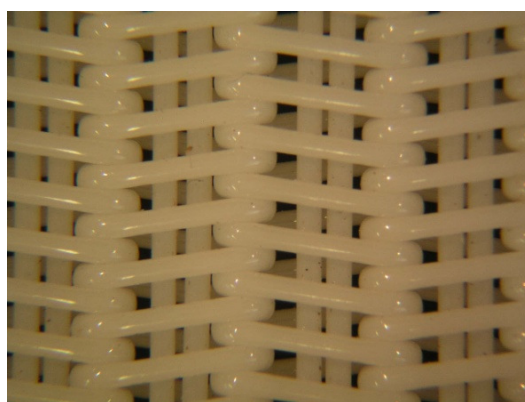
Version		Without fillers
Spiral yarn diameter		0,6 mm PET
Cross direction yarn diameter		0,8 mm PET
Number of spiral yarns	(yarns/cm)	8,3
Number of cross direction yarns	(yarns/cm)	2,4
Air permeability	l/m ² /s (200 Pa) CFM (125 Pa)	7290 900
Thickness	(mm)	2,1
Square weight	(g/m ²)	1240
Available seams		Spiral
Maximum operating temperature	(°C)	60° (can be extended up to 100°)

Product description:

Filtration spiral fabric with fine spirals and very high air permeability.

Availability: on request

MicroSpiral F



Product photo

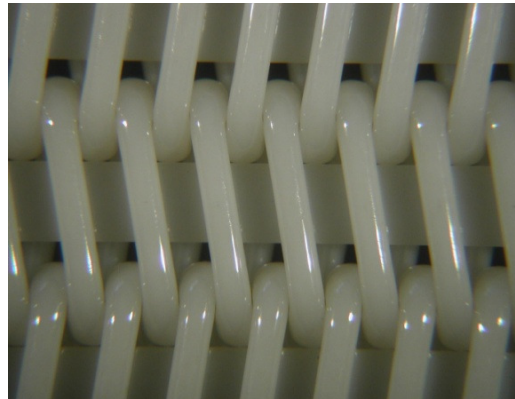
Version		2 round fillers
Spiral yarn diameter		0,6 mm PET
Cross direction yarn diameter		0,8 mm PET
Number of spiral yarns	(yarns/cm)	8,3
Number of cross direction yarns	(yarns/cm)	2,2
Air permeability	l/m ² /s (200 Pa) CFM (125 Pa)	4800 - 5600 600 - 700
Thickness	(mm)	2,1
Square weight	(g/m ²)	1400
Available seams		Spiral
Maximum operating temperature	(°C)	60° (can be extended up to 100°)

Product description:

Filtration spiral fabric with fine spirals and high air permeability.

Availability: on request

MicroSpiral F-L



Product photo

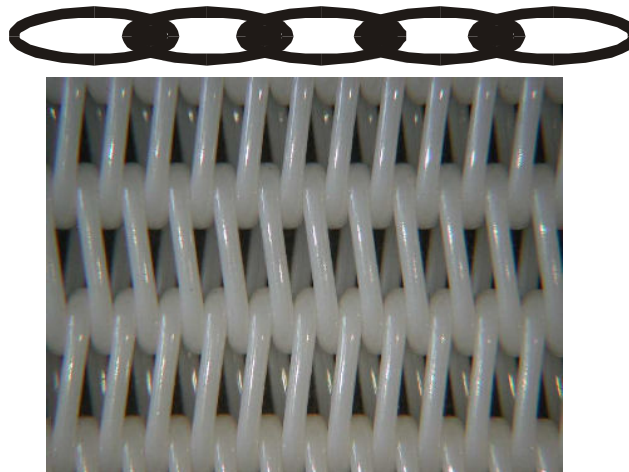
Version		1 flat filler
Spiral yarn diameter		0,6 mm PET
Cross direction yarn diameter		0,8 mm PET
Number of spiral yarns	(yarns/cm)	8,3
Number of cross direction yarns	(yarns/cm)	2,4
Air permeability	l/m ² /s (200 Pa) CFM (125 Pa)	3400 420
Thickness	(mm)	2,1
Square weight	(g/m ²)	1400
Available seams		Spiral

Product description:

Filtration spiral fabric with fine spirals and high air permeability.

Availability: on request

Spiral F90



Product photo

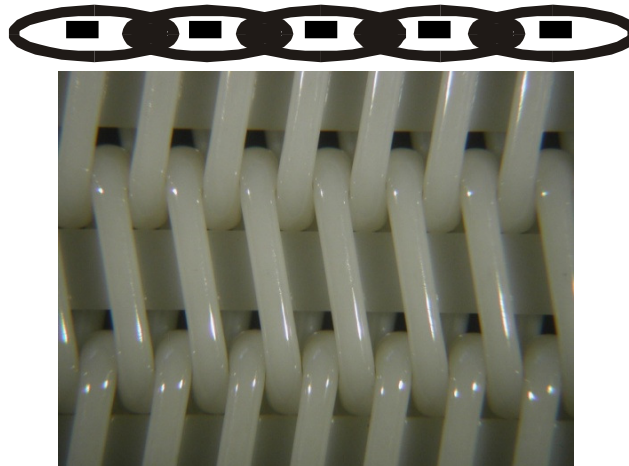
Version	No fillers
Spiral yarn diameter	0,68 mm PET
Cross direction yarn diameter	0,9 mm PET
Number of spiral yarns (yarns/cm)	7,2
Number of cross direction yarns (yarns/cm)	1,9
Air permeability	l/m ² /s (200 Pa) CFM (125 Pa)
	7940 980
Thickness (mm)	2,4
Square weight (g/m ²)	1317
Available seams	Spiral
Maximum operating temperature (°C)	60° (can be extended up to 100°)

Product description:

Standard filtration spiral fabric with very high air permeability.

Availability: usually in stock

Spiral F



Product photo

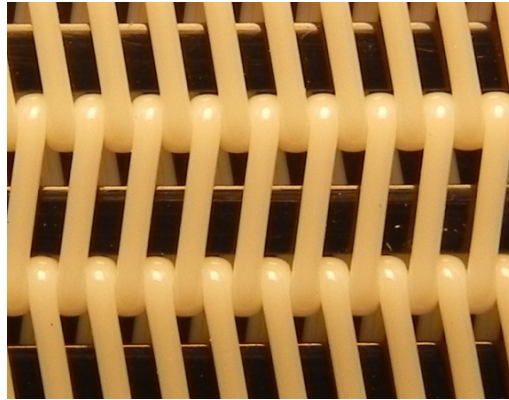
Version		1 flat filler
Spiral yarn diameter		0,68 mm PET
Cross direction yarn diameter		0,9 mm PET
Number of spiral yarns	(yarns/cm)	7,2
Number of cross direction yarns	(yarns/cm)	1,9
Air permeability	l/m ² /s (200 Pa) CFM (125 Pa)	4500 - 4800 550 - 600
Thickness	(mm)	2,4
Square weight	(g/m ²)	1650
Available seams		Spiral
Maximum operating temperature	(°C)	60° (can be extended up to 100°)

Product description:

Standard filtration spiral fabric with middle air permeability.

Availability: usually in stock

Spiral F



Product photo

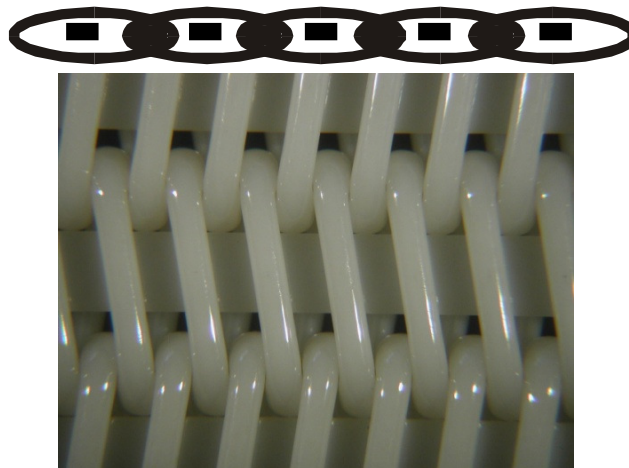
Version	1 flat filler: Size: 0,65 x 2,00 mm
Spiral yarn diameter	0,68 mm PET
Cross direction yarn diameter	0,9 mm PET
Number of spiral yarns (yarns/cm)	7,2
Number of cross direction yarns (yarns/cm)	1,9
Air permeability	l/m ² /s (200 Pa) CFM (125 Pa)
	5000 - 5400 620 - 670
Thickness (mm)	2,4
Square weight (g/m ²)	1643
Available seams	Spiral

Product description:

Standard filtration spiral fabric with high air permeability for gravity dewatering.

Availability: usually in stock

Spiral F-L



Product photo

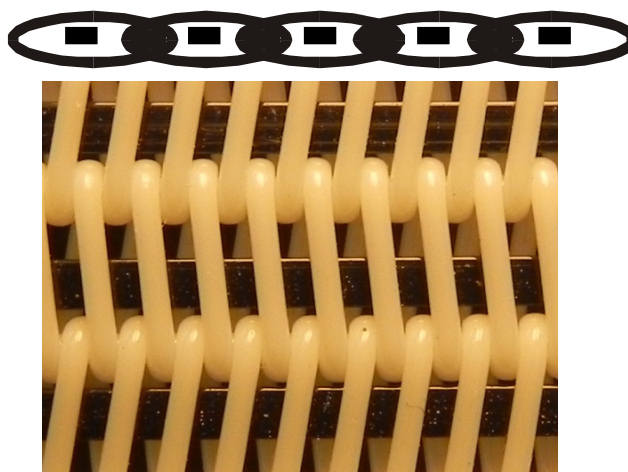
Version	1 flat filler 2,7 x 0,65mm
Spiral yarn diameter	0,68 mm PET
Cross direction yarn diameter	0,9 mm PET
Number of spiral yarns (yarns/cm)	7,2
Number of cross direction yarns (yarns/cm)	1,9
Air permeability	l/m ² /s (200 Pa) CFM (125 Pa)
	3600 - 4000 450 - 500
Thickness (mm)	2,4
Square weight (g/m ²)	1680
Available seams	Spiral
Maximum operating temperature (°C)	60° (can be extended up to 100°)

Product description:

Standard filtration spiral fabric with middle air permeability .

Availability: usually in stock

Spiral F



Product photo

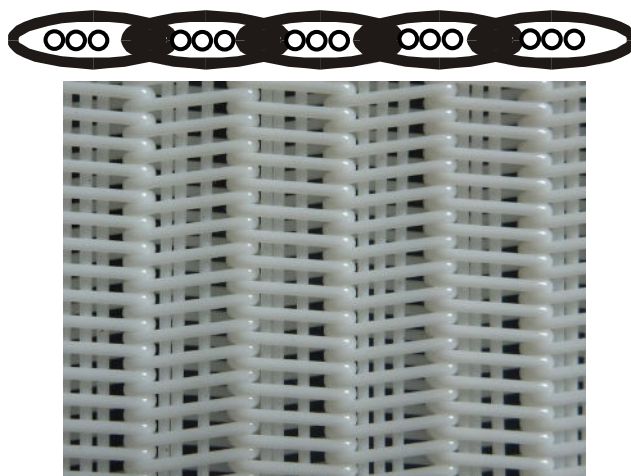
Version		1 flat filler 0,65 x 1,6 mm
Spiral yarn diameter		0,68 mm PET
Cross direction yarn diameter		0,9 mm PET
Number of spiral yarns	(yarns/cm)	7,2
Number of cross direction yarns	(yarns/cm)	1,9
Air permeability	l/m ² /s (200 Pa) CFM (125 Pa)	5800 - 6300 720 – 780
Thickness	(mm)	2,4
Square weight	(g/m ²)	1636
Available seams		Spiral
Maximum operating temperature	(°C)	60° (can be extended up to 100°)

Product description:

Standard filtration spiral fabric with high air permeability.

Availability: usually in stock

Spiral F



Product photo

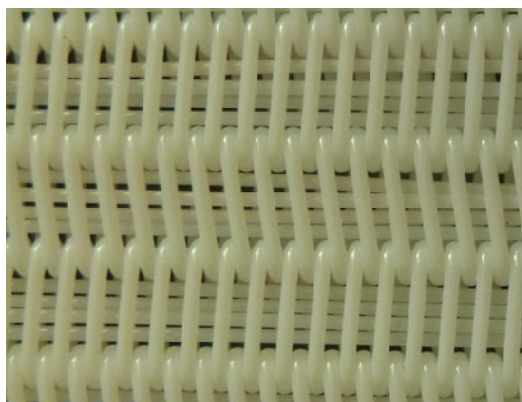
Version		3 round fillers
Spiral yarn diameter		0,68 mm PET
Cross direction yarn diameter		0,9 mm PET
Number of spiral yarns	(yarns/cm)	7,2
Number of cross direction yarns	(yarns/cm)	1,9
Air permeability	l/m ² /s (200 Pa) CFM (125 Pa)	5200 - 5600 650 - 700
Thickness	(mm)	2,4
Square weight	(g/m ²)	1690
Available seams		Spiral
Maximum operating temperature	(°C)	60° (can be extended up to 100°)

Product description:

Standard filtration spiral fabric with middle air permeability.

Availability: usually in stock

Spiral F



Product photo

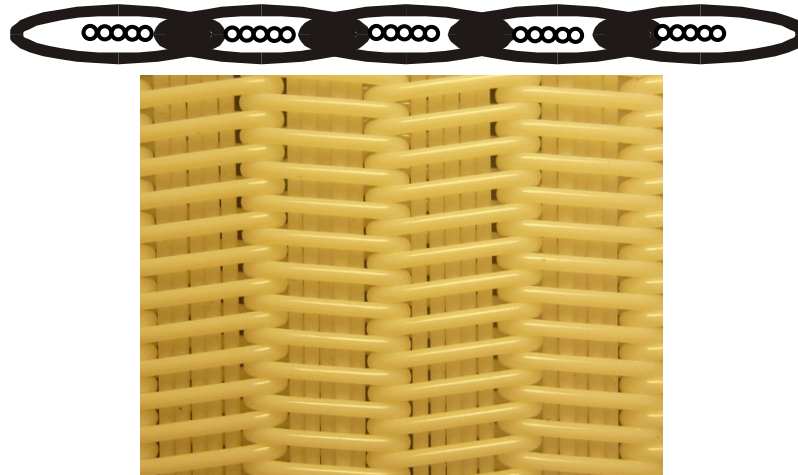
Version	4 round fillers
Spiral yarn diameter	0,68 mm PET
Cross direction yarn diameter	0,9 mm PET
Number of spiral yarns (yarns/cm)	7,2
Number of cross direction yarns (yarns/cm)	1,9
Air permeability	l/m ² /s (200 Pa) CFM (125 Pa)
	4000 - 4400 500 - 550
Thickness (mm)	2,4
Square weight (g/m ²)	1730
Available seams	Spiral
Maximum operating temperature (°C)	60° (can be extended up to 100°)

Product description:

Standard filtration spiral fabric with middle air permeability.

Availability: usually in stock

Spiral F



Product photo

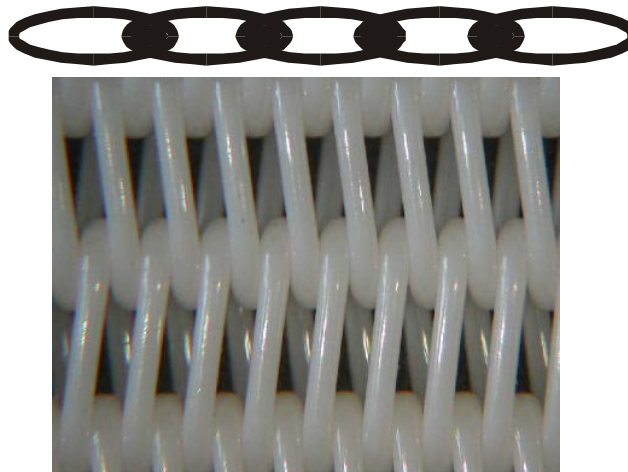
Version		5round fillers
Spiral yarn diameter		0,68 mm PET
Cross direction yarn diameter		0,9 mm PET
Number of spiral yarns	(yarns/cm)	7,2
Number of cross direction yarns	(yarns/cm)	1,9
Air permeability	l/m ² /s (200 Pa) CFM (125 Pa)	3200 - 3600 400-450
Thickness	(mm)	2,4
Square weight	(g/m ²)	1770
Available seams		Spiral
Maximum operating temperature	(°C)	60° (can be extended up to 100°)

Product description:

Standard filtration spiral fabric with middle air permeability.

Availability: usually in stock

HeavySpiral F90



Product photo

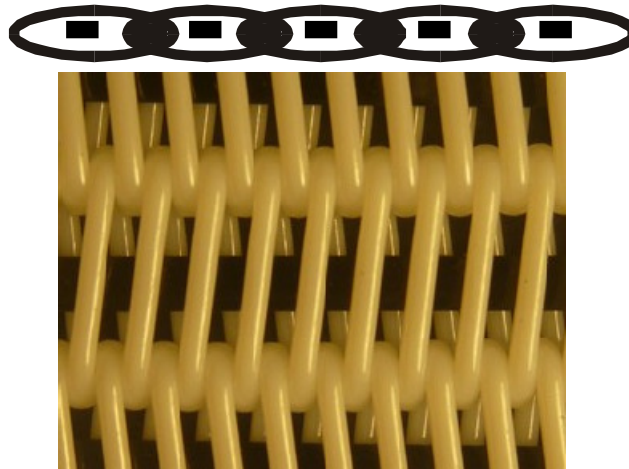
Version	No fillers
Spiral yarn diameter	0,9 mm PET
Cross direction yarn diameter	1,05 mm PET
Number of spiral yarns (yarns/cm)	5,4
Number of cross direction yarns (yarns/cm)	1,35
Air permeability	7940
	980
Thickness (mm)	3,1
Square weight (g/m ²)	1655
Available seams	Spiral
Maximum operating temperature (°C)	60° (can be extended up to 100°)

Product description:

Heavy duty filtration spiral fabric with very high air permeability.

Availability: usually in stock

HeavySpiral F



Product photo

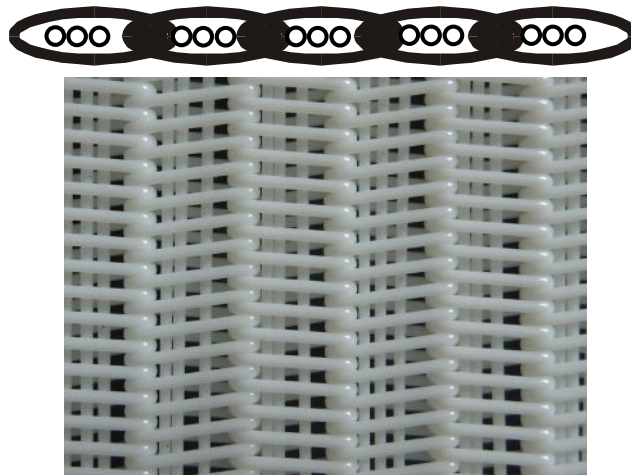
Version		1 flat filler
Spiral yarn diameter		0,9 mm PET
Cross direction yarn diameter		1,05 mm PET
Number of spiral yarns	(yarns/cm)	5,4
Number of cross direction yarns	(yarns/cm)	1,35
Air permeability	l/m ² /s (200 Pa) CFM (125 Pa)	4800 - 5600 600 - 700
Thickness	(mm)	3,1
Square weight	(g/m ²)	1920
Available seams		Spiral
Maximum operating temperature	(°C)	60° (can be extended up to 100°)

Product description:

Heavy duty filtration spiral fabric with high air permeability.

Availability: usually in stock

HeavySpiral F



Product photo

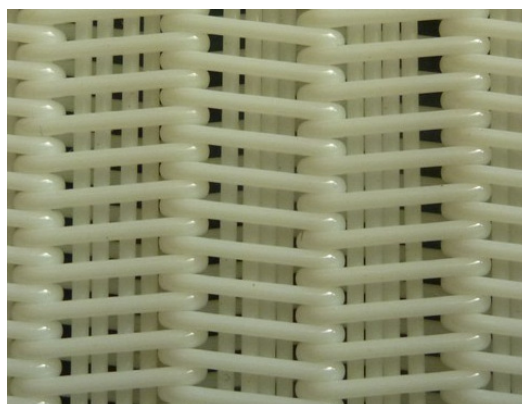
Version		3 round fillers
Spiral yarn diameter		0,9 mm PET
Cross direction yarn diameter		1,05 mm PET
Number of spiral yarns	(yarns/cm)	5,4
Number of cross direction yarns	(yarns/cm)	1,35
Air permeability	l/m ² /s (200 Pa) CFM (125 Pa)	4800 - 5600 600 - 700
Thickness	(mm)	3,1
Square weight	(g/m ²)	1925
Available seams		Spiral
Maximum operating temperature	(°C)	60° (can be extended up to 100°)

Product description:

Heavy duty filtration spiral fabric with high air permeability.

Availability: usually in stock

HeavySpiral F



Product photo

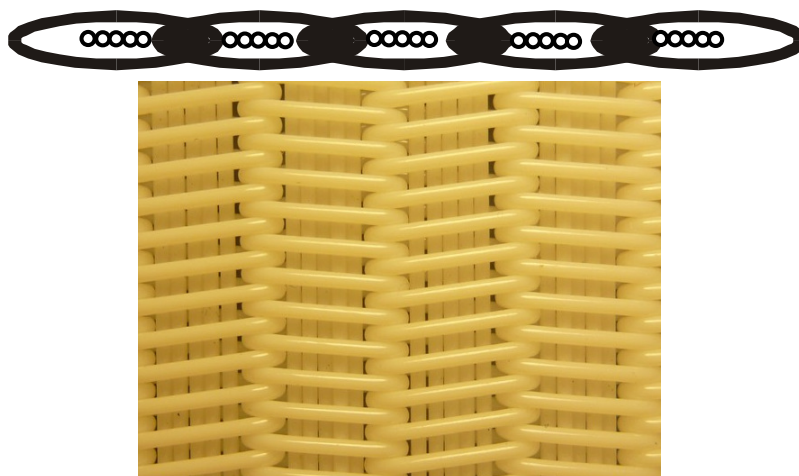
Version		4 round fillers
Spiral yarn diameter		0,9 mm PET
Cross direction yarn diameter		1,05 mm PET
Number of spiral yarns	(yarns/cm)	5,4
Number of cross direction yarns	(yarns/cm)	1,35
Air permeability	l/m ² /s (200 Pa) CFM (125 Pa)	3600 - 4500 450 - 550
Thickness	(mm)	3,1
Square weight	(g/m ²)	2075
Available seams		Spiral
Maximum operating temperature	(°C)	60° (can be extended up to 100°)

Product description:

Heavy duty filtration spiral fabric with middle air permeability.

Availability: usually in stock

HeavySpiral F



Product photo

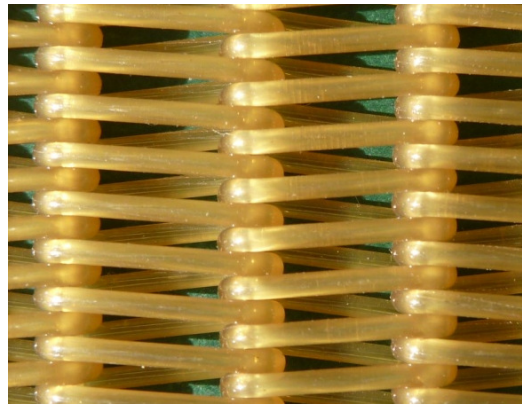
Version		5 round fillers
Spiral yarn diameter		0,9 mm PET
Cross direction yarn diameter		1,05 mm PET
Number of spiral yarns	(yarns/cm)	5,4
Number of cross direction yarns	(yarns/cm)	1,35
Air permeability	l/m ² /s (200 Pa) CFM (125 Pa)	3200- 3600 400 - 450
Thickness	(mm)	3,1
Square weight	(g/m ²)	2125
Available seams		Spiral
Maximum operating temperature	(°C)	60° (can be extended up to 100°)

Product description:

Heavy duty filtration spiral fabric with low air permeability.

Availability: usually in stock

HeavySpiral PPS90



Product photo

Version	No filler
Spiral yarn diameter	0,9 mm PPS
Cross direction yarn diameter	1,05 mm PPS
Number of spiral yarns (yarns/cm)	5,0
Number of cross direction yarns (yarns/cm)	1,35
Air permeability	8100
	1000
Thickness (mm)	3,45
Square weight (g/m ²)	1600
Available seams	Spiral
Maximum operating temperature (°C)	180°

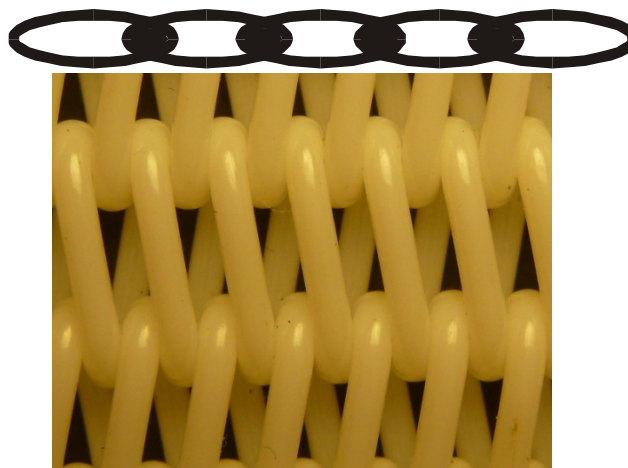
Product description:

Heavy duty spiral fabric with high air permeability.

Fabric is made of 100% material PPS.

Availability: on request

SpiralHD - ExtraLife



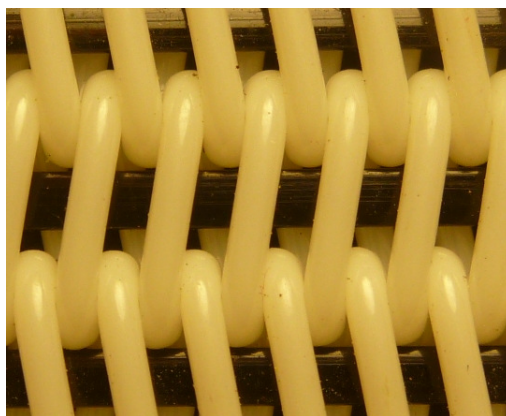
Version	<i>Product photo</i>	No filler
Spiral yarn diameter		1,10 mm modified PET (high abrasion resistance)
Cross direction yarn diameter		0,9 mm PET
Number of cross direction yarns (yarns/cm)		2,0
Air permeability	l/m ² /s (200 Pa) CFM (125 Pa)	7940 980
Thickness	(mm)	3,75
Square weight	(g/m ²)	2200
Available seams		Spiral
Maximum operating temperature	(°C)	60° (can be extended up to 100°)

Product description:

The most robust and durable heavy duty spiral fabric available on the market today. Fabric was especially designed for extremely abrasive applications and for high pressure belt presses.

Availability: usually in stock

SpiralHD - ExtraLife



Product photo

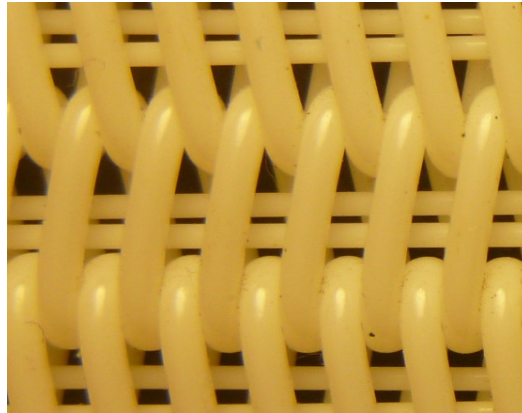
Version	1 flat filler 1,6mm	
Spiral yarn diameter	1,10 mm modified PET (high abrasion resistance)	
Cross direction yarn diameter	0,9 mm PET	
Number of cross direction yarns (yarns/cm)	2,0	
Air permeability	l/m ² /s (200 Pa) CFM (125 Pa)	4500 550
Thickness	(mm)	3,75
Square weight	(g/m ²)	2460
Available seams	Spiral	
Maximum operating temperature	(°C)	60° (can be extended up to 100°)

Product description:

The most robust and durable heavy duty spiral fabric available on the market today. Fabric was especially designed for extremely abrasive applications and for high pressure belt presses. Improved edge reinforcement is guarantee of high edge mechanical resistance.

Availability: usually in stock

SpiralHD - ExtraLife



Product photo

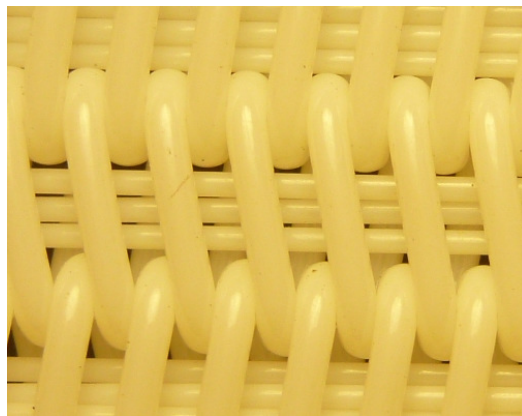
Version	2 round fillers 0,7mm	
Spiral yarn diameter	1,10 mm modified PET (high abrasion resistance)	
Cross direction yarn diameter	0,9 mm PET	
Number of cross direction yarns (yarns/cm)	2,0	
Air permeability	l/m ² /s (200 Pa) CFM (125 Pa)	4900 600
Thickness	(mm)	3,75
Square weight	(g/m ²)	2460
Available seams	Spiral	
Maximum operating temperature	(°C)	60° (can be extended up to 100°)

Product description:

The most robust and durable heavy duty spiral fabric available on the market today. Fabric was especially designed for extremely abrasive applications and for high pressure belt presses. Improved edge reinforcement is guarantee of high edge mechanical resistance.

Availability: usually in stock

SpiralHD - ExtraLife



Product photo

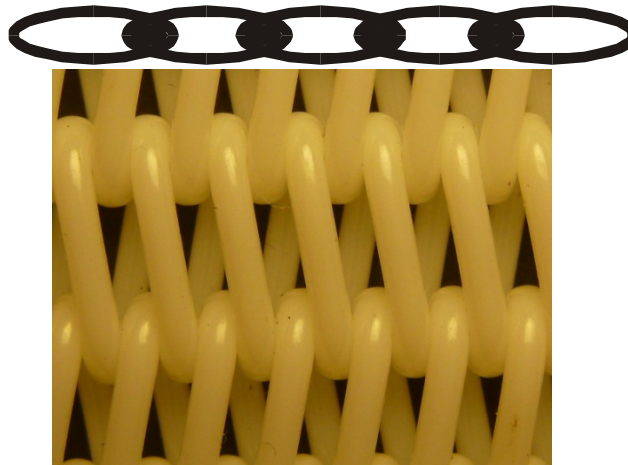
Version	3 round fillers	
Spiral yarn diameter	1,10 mm modified PET (high abrasion resistance)	
Cross direction yarn diameter	0,9 mm PET	
Number of cross direction yarns (yarns/cm)	2,0	
Air permeability	l/m ² /s (200 Pa) CFM (125 Pa)	3400 420
Thickness	(mm)	3,75
Square weight	(g/m ²)	2520
Available seams	Spiral	
Maximum operating temperature	(°C)	60° (can be extended up to 100°)

Product description:

The most robust and durable heavy duty spiral fabric available on the market today. Fabric was especially designed for extremely abrasive applications and for high pressure belt presses. Improved edge reinforcement is guarantee of high edge mechanical resistance.

Availability: usually in stock

Spiral HDPA – ExtraLife



Product photo

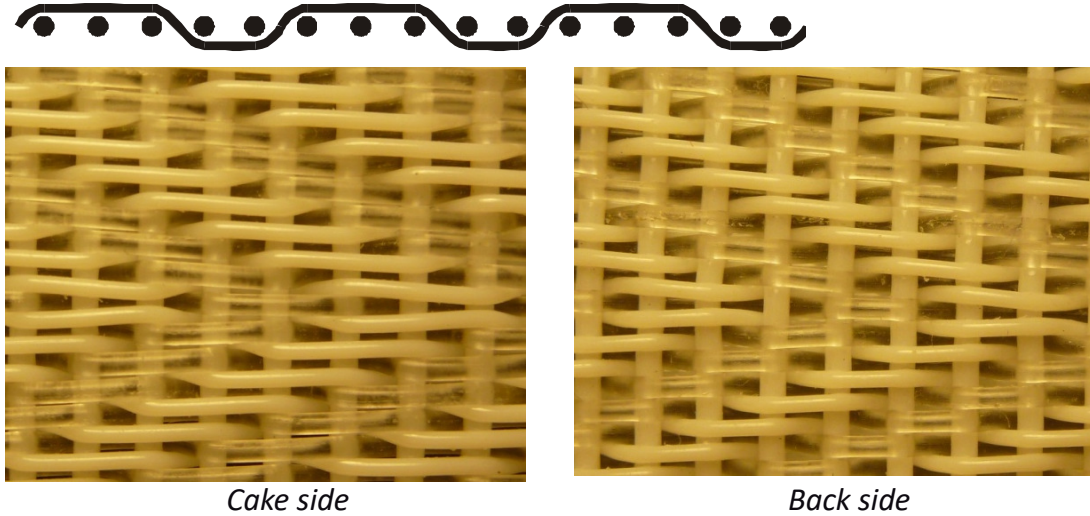
Version	No filler	
Spiral yarn diameter	1,10 mm PET core + PAD cover	
Cross direction yarn diameter	0,9 mm PET core + PAD cover	
Number of cross direction yarns (yarns/cm)	2,0	
Air permeability	l/m ² /s (200 Pa) CFM (125 Pa)	7940 980
Thickness	(mm)	3,75
Square weight	(g/m ²)	2200
Available seams	Spiral	
Maximum operating temperature	(°C)	60° (can be extended up to 100°)

Product description:

The most robust and durable heavy duty spiral fabric available on the market today. Fabric was especially designed for extremely abrasive applications and alkaline sludge

Availability: on request

FilteraPress HD17-43P



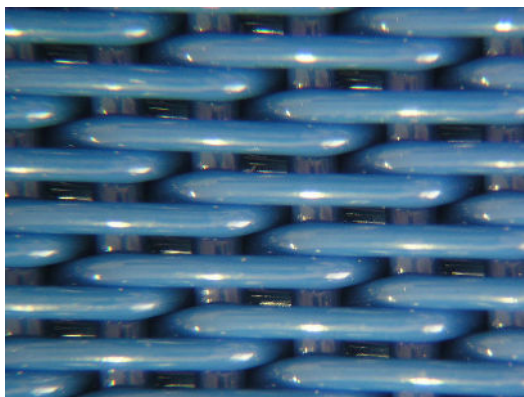
Weave	Twill 3/2	
Warp	0,65 mm PET 0,8 mm PAD	
Weft	1,00 mm PET	
Air permeability	l/m ² /s (200 Pa) CFM (125 Pa)	3500 430
Thickness	(mm)	2,45
Square weight	(g/m ²)	1605
Available seams	Stainless Steel Clipper Woven (endless belt)	
Maximum operating temperature	(°C)	60° (can be extended up to 100°)

Product description:

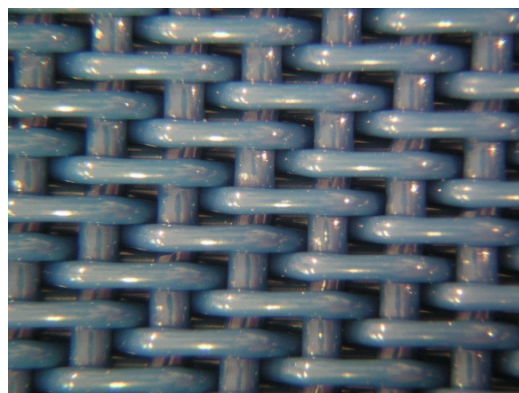
Heavy duty filtration fabric for belts press for abrasive sludge.

Availability: on request

FilteraPress HD18-54



Cake side



Back side

Weave		Twill 3/2
Warp		0,7 mm PET
Weft		1,05 mm PET
Number of Warps	(yarns/cm)	18
Number of Wefts	(yarns/cm)	5
Air permeability	l/m ² /s (200 Pa) CFM (125 Pa)	4400 540
Thickness	(mm)	2,43
Square weight	(g/m ²)	1550
Available seams		Stainless Steel Clipper Woven (endless belt)
Maximum operating temperature	(°C)	60° (can be extended up to 100°)

Product description:

Filtration fabric for belt filter press.

Availability: on request

Drying Fabrics - Overview



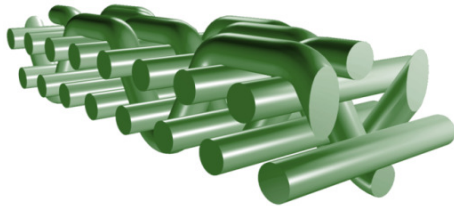
Woven Fabrics – Single Layer



Fabrics with one layer of wefts.

- low caliper
- relatively easy to clean

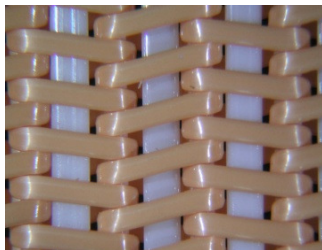
Woven Fabrics – Double Layer



Fabrics with two layers of wefts.

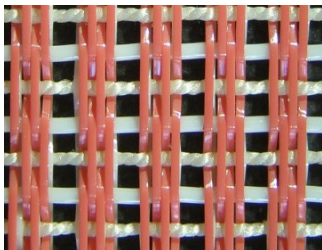
- robust durable fabric
- strong spiral seam

Spiral Fabrics



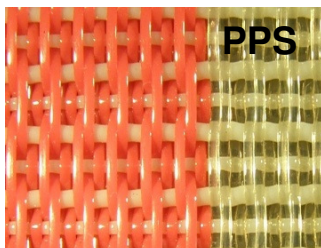
Spiral fabrics are used for wide variety of drying applications. Its advantage is strong seam and high diagonal stability.

Anti - Sticky Fabrics



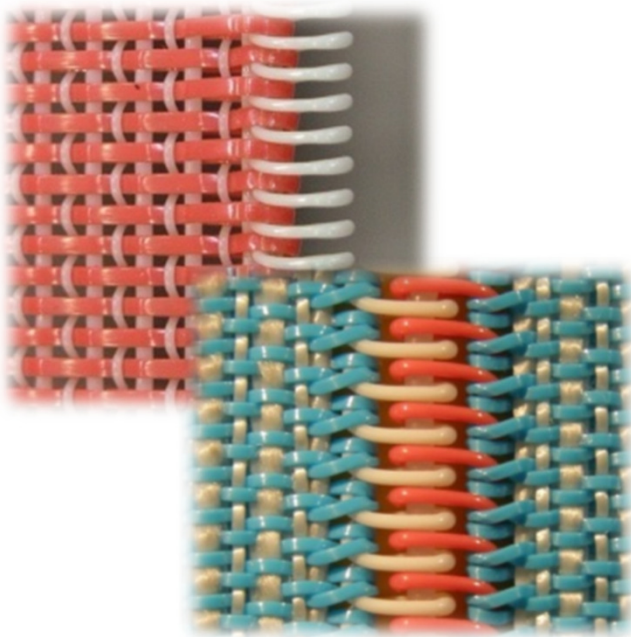
Fabrics with higher resistance against stickies. Fabrics are made of anti-sticky PET and fabric design enables easier fabric cleaning.

PPS Fabrics



PPS drying fabrics withstand all heat and humidity conditions in the drying section. PPS yarns are 100% resistant against hydrolysis. Standard PET drying fabric can be equipped with PPS edges (see picture).

Spiral seam



Advantages

High strength and lifetime

In-line warp loop seam

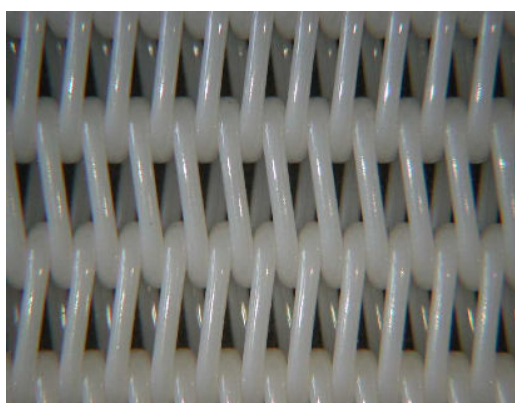


Quick and easy seaming

In line with fabric = **NO MARKING**

Ideal for slalom and first positions

Spiral D90



Fabric type		Spiral drying fabric
Material of yarns		Hydrolysis resistant PET
Diameter of warp	(mm)	0,7
Diameter of weft	(mm)	0,9
Air permeability	CFM (125 Pa)	900
Square weight	(g/m ²)	1320
Caliper	(mm)	2,7
Maximum operating temperature	(°C)	150°

Product description:

Spiral dryer fabric with high air permeability. Fabric is used in positions, where high air permeability and quick transport of wet air out from the paper is required.

Availability: on request